

KIELER WOCHE

21 - 29 June 2025



Notice of Race



WELLER



iQFOiL - Notice of Race not included

A Notice of Race for iQFOiLs will be published separately.

The venue for foiling events/classes will be located on the easterly side of kiel bay. See NoR 10.2.1

www.kieler-woche.de/segeln



REWE
Dein Markt



REWE Bonus



Sammle Euros in der REWE App!



So funktioniert's:

REWE App downloaden, Kundenkonto erstellen
und an REWE Bonus teilnehmen.

Mehr auf rewe.de/bonus oder in der REWE App

In vielen Märkten: Montag bis Samstag bis 22 Uhr geöffnet.
Beachte unsere kundenfreundlichen Öffnungszeiten am Markt.

rewe.de



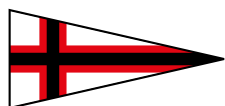
21 - 29 June 2025

Content

Page 3	General Information
Page 5	Notice of Race - Inshore applies to Kiel Week Part I & Part II
Page 27	Notice of Race - Offshore applies to Aalregatta, Kiel Cup, Senatspreis, Silbernes Band and International German Championship
Page 50	Additional Information
Page 53	Addendum Driving Map Kiel-Schilksee-Stein
Page 54	Addendum Traffic Separation Schemes

General Information

ORGANIZING AUTHORITY FOR KIEL WEEK

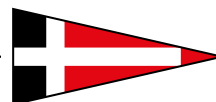


KIELER
YACHT-CLUB

IN CONJUNCTION WITH



NORDDEUTSCHER
REGATTAVEREIN



VEREIN
SEGLERHAUS
AM WANNSEE

FOR IDM INSHORE, OFFSHORE
AND DOUBLE HANDED



DEUTSCHER
SEGLER-
VERBAND

EVENT WEBSITE: WWW.KIELER-WOCHE.COM

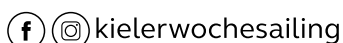
CONTACT

Kieler Yacht-Club e.V.

Kiellinie 70, 24105 Kiel, Germany

Phone: +49 (0) 431 8 50 23 | Fax: +49 (0) 431 8 39 39

E-Mail: kiwo@kyc.de | Web: www.kyc.de



IT'S YOUR TÖRN.

Gewinnen und helfen. HIGH FIVE!



Hintergrundfoto: Kassian Jürgens



Profitieren Sie jetzt mit dem Kieler-Woche-LOS **von attraktiven Gewinnmöglichkeiten:** lebenslange Sofortrenten **von bis zu 5.000 Euro** jeden Monat, Geldgewinne **bis zu 1.000.000 Euro** in allen Hauptziehungen und tolle Extragewinne wie **Autos, Reisen und Extrageld** in Sonderverlosungen.

Und das Beste? Mit Ihrem Loskauf unterstützen Sie gleichzeitig soziale Projekte in der Region und deutschlandweit.

Loskauf ab 18 Jahren. Glücksspiel birgt Risiken. Infos auf www.bzga.de.



Bestellen Sie Ihr Kieler-Woche-LOS jetzt auf
fernsehlottterie.de/kieler-woche

Notice of Race - Inshore

APPLIES TO KIEL WEEK PART I AND PART II

The notation '[NP]' in a rule means that a boat/board/kiteboard may not protest another boat/board/kiteboard for breaking that rule. The international jury may refuse to hold a hearing when a boat/board/kiteboard protests based on these rules. This changes RRS 60.1 and 63.2.

The notation '[SP]' in a rule means that a standard penalty may be applied by the race committee or technical committee without a hearing or a discretionary penalty may be applied by the international jury with a hearing. This changes RRS A5.1.

1 RULES

- 1.1 The event is governed by the rules as defined in The Racing Rules of Sailing (RRS). Other documents under RRS Definition 'rule' (g) include:
 - 1.1.1 Event Support Team Regulations (ESTR), as published on the [official notice board](#);
 - 1.1.2 Event Media and Marketing Rules (EMMR), as published on the [KYC website](#);
 - 1.1.3 29er Euro Cup Notice of Series, as published on the website of the International 29er Class Association.
- 1.2 RRS 40.1 applies at all times while afloat.
- 1.3 Men's kite and Women's kite only:

Helmets and impact vests in compliance with the class rules shall be worn at all times while afloat, except briefly while changing or adjusting clothing or personal equipment. The impact vest shall meet the requirements of a personal flotation device as defined in the class rules.
- 1.4 All classes except Olympic events:

RRS Appendix T, Arbitration, applies.
- 1.5 All classes/Olympic events except Men's kite, Women's kite and WingFoil Racing: RRS Appendix P, Special Procedures for Rule 42, applies.
- 1.6 Wingfoil Racing only:

Appendix WF, Wingfoil Racing Rules, as published on the event website, applies.
- 1.7 Olympic events only except Men's kite and Women's kite:

For medal races, World Sailing Appendix MR, Umpired Medal Racing, available on the World Sailing website (www.sailing.org), applies. The version that is current when the event begins will be published on the official notice board.
- 1.8 Men's kite and Women's kite only:

For medal series races, Addendum FMS, Kiteboarding Medal Series, available on the World Sailing website (www.sailing.org), applies. The version that is current when the event begins will be published on the official notice board.
- 1.9 The national authority prescriptions of the German Sailing Federation (DSV) applies and will be published on the official notice board.
- 1.10 If there is a conflict between languages the English text takes precedence.

2 SAILING INSTRUCTIONS

The Sailing Instructions will be available on the [event website](#) from June 2025 on.

FREIHEIT AUF ALLEN WEGEN

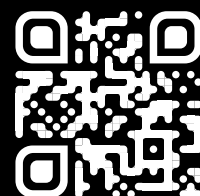


Wenn Segel den Wind spüren, beginnt wahre Bewegung.

Lexus steht für kraftvolle Eleganz, **WELLER** für Leidenschaft auf vier Rädern. Gemeinsam feiern wir die Kieler Woche – dort, wo Dynamik und Stil aufeinandertreffen.

WELLER – Ihr Mobilitätspartner 35x in Deutschland - Emotion in jeder Bewegung.

WELLER



wellergruppe.de



3 COMMUNICATION

- 3.1 The official notice board is located on the event website.
- 3.2 Skippers' and support persons' meetings and hearings may be conducted using an online video application.
- 3.3 J/24 and J/70 only:
On the water, the race committee will make courtesy broadcasts to competitors on VHF radio. The channels will be stated in the Sailing Instructions.
- 3.4 [DP] While racing, except in an emergency or when using equipment provided by the organizing authority, a boat/board/kiteboard shall not make voice or data transmissions and shall not receive voice or data communication that is not available to all boats/boards/kiteboards.

4 ELIGIBILITY AND ENTRY

- 4.1 The event is open to all boats/boards/kiteboards of the classes/Olympic events stated in NoR
- 4.2 To help preserve the integrity and safety of the event and its participants, and as recommended by the Executive Board of the International Olympic Committee (IOC) with its resolution of 28 February 2022 and the related recommendations of World Sailing and Deutscher Segler-Verband e.V. (DSV) to all organizing authorities, entries shall not be open to boats/boards representing Russia or Belarus and/or competitors holding only Russian or Belarussian nationality. The organizing authority may amend this rule in the event of a change of circumstances or following any further World Sailing decisions on the situation with Russia and Belarus concerning the war against Ukraine in definition and with reference to UN Charta principles.
- 4.3 Eligible boats/boards/kiteboards may enter no later than 15 June 2025 by registering online at the event website and paying the entry fee. Entry will be completed by registration on site.
- 4.4 The minimum number of entries for each class/Olympic event is stated in the table in NoR 5.1. The organizing authority may cancel a class/Olympic event if the minimum number of entries has not been reached by 30 April 2025.
- 4.5 The maximum number of entries for each class/Olympic event is stated in NoR 5.1. If the maximum number of boats/boards/kiteboards of a class/Olympic event is reached, additional entries are moved to a waiting list. Boats/boards/kiteboards moved to a waiting list will be informed no later than 16 June 2025 if their entry is accepted.
- 4.6 Olympic events only:
 - 4.6.1 [DP] Each competitor shall be registered as a World Sailing Sailor on the World Sailing website. World Sailing Sailor IDs will be required to complete the online entry.
 - 4.6.2 Olympic gender requirements apply for each Olympic event, except that men and mixed teams are also eligible to compete in the Women's skiff event.





170
PEOPLE

3
YEARS OF TRAINING

7,896
HOURS OF SAILING

0
REGRETS

WHAT IT TAKES



ALIVE
SINCE / 1877

5 FEES

5.1 Entry fees are as follows:

Classes / Olympic events		Early Entry Fee (EUR) until 30 April 2025	Entry Fee (EUR) from 01 May until 31 May 2025	Late Entry Fee (EUR) from 01 June until 15 June 2025	Min. number of entries	Max. number of entries
KIELER WOCHE, PART I (21 - 25 JUNE 2025)						
OLYMPIC EVENTS	EQUIPMENT					
Mens's dinghy	ILCA 7	255	355	455	30	120
Women's dinghy	ILCA 6	250	350	450	30	60
Men's skiff	49er	355	455	555	30	70
Women's skiff	49erFX	355	455	555	30	70
Men's Kite	Formula Kite	250	350	450	20	-
Women's Kite	Formula Kite	250	350	450	20	-
INTERNATIONAL CLASSES						
29er (Euro-Cup)		265	365	465	60	180
KIELER WOCHE, PART II (25 - 29 JUNE 2025)						
OLYMPIC EVENTS (FROM 25 JUNE)	EQUIPMENT					
Mixed multihull	Nacra 17	350	450	550	20	35
Mixed dinghy	470	350	450	550	20	60
INTERNATIONAL CLASSES (26 - 29 JUNE 2025)						
2.4mR		235	335	435	30	60
420		265	365	465	30	120
Contender		185	285	385	30	-
Flying Dutchman		260	360	460	30	-
ILCA 4		185	285	385	30	60
ILCA 6 (open)		190	290	390	60	120
J/24		400	500	600	15	-
J/70		400	500	600	25	-
OK Dinghy		185	285	385	30	-
WingFoil Racing		185	285	385	30	-

5.2 The entry fee includes:

- 5.2.1 A deposit of 5.00 EUR for the RFID safety wristband. The deposit will be refunded on return.
- 5.2.2 29er, 420, ILCA 6 (open), Men's dinghy, Men's skiff and Woman's skiff only:
A deposit of 5.00 EUR for the coloured fleet ribbons. The deposit will be refunded on return.
- 5.2.3 2.4mR, J/24 and J/70 only:
Craning fee for one launching and one haul-out.
- 5.2.4 The berthing fee for the scheduled racing days (NoR 8.3). In case of a longer berthing time, the boat/board/kiteboard shall pay an additional fee for this period at the harbour master's office.

- 5.3 The entry fee shall be paid via the online payment system (direct debit or credit card) upon entering, even if the boat/board/kiteboard does not show up. The fee is non-refundable, except if the organizing authority cancels the class/Olympic event or the entry is rejected or cancelled under RRS 76.1.

POWER ADE®

Kleine
Pause,
große
Wirkung.

PAUSE IS POWER



6 [DP] ADVERTISING AND IDENTIFICATION

- 6.1 Boats/boards/kiteboards may be required to display event advertising chosen and supplied by the organizing authority. Boats/boards/kiteboards shall not display advertising from previous events.
- 6.2 The organizing authority may provide bibs that competitors are required to wear.
- 6.3 Men's kite and Women's kite only:
When provided by the organizing authority, competitors shall wear the following as instructed:
 - 6.3.1 Bibs with an individually assigned competition number, worn as intended over all other clothing and equipment at any time when afloat.
 - 6.3.2 Event leader bibs with an individually assigned competition number, worn as intended over all other clothing and equipment at any time when afloat.
- 6.4 It is prohibited to distribute and display advertising material both in the area of the shore facilities and jetties or to attach such material separately on the boats/boards/kiteboards and harbour facilities, unless prior permission has been given by the organizing authority.

7 FORMAT

- 7.1 The event may consist of a qualifying series and a final series.
- 7.2 Olympic events except Men's kite and Women's kite:
 - 7.2.1 The event will consist of an opening series and a medal race. The opening series may be divided into a qualifying series and a final series.
 - 7.2.2 The ten highest ranked boats at the conclusion of the opening series of each event will advance to the medal race, provided a minimum of four races have been completed in the opening series.
- 7.3 Men's kite and Women's kite only:
NoR Addendum 'Kiteboarding', as published on the event website, applies.
- 7.4 Wingfoil Racing only:
NoR Addendum 'Wingfoil', as published on the event website, applies.





Hi AIDA

lass uns dem Alltag davonsegeln.

Packen Sie Ihr Fernweh in den Koffer und lassen Sie sich leiten – von Wind und Wellen, von Lust und Laune. Am Horizont locken neue Länder, durchtanzte Nächte, entspannte Wohlfühlmomente und 1.000 schöne Überraschungen. Auf die Vorfreude, fertig, AIDA.



8 SCHEDULE

8.1 Registration:

Classes / Olympic events	Registration	Location of Registration
29er, Men's dinghy, Women's dinghy, Men's skiff, Women's skiff	20 June – 1000-2200 hrs. 21 June – 0800-1100 hrs.	Olympic Sailing Center, 24159 Kiel-Schilksee
Men's kite, Women's kite	20 June – 1000-2000 hrs. 21 June – 0800-1100 hrs.	Marina, 24235 Stein
2.4mR, Contender, Flying Dutchman, ILCA 4, ILCA 6 (open), J/24, J/70, 420, OK dinghy	25 June – 1000-2000 hrs. 26 June – 0800-1100 hrs.	Olympic Sailing Center, 24159 Kiel-Schilksee
Mixed dinghy, Mixed multihull	24 June – 1000-2000 hrs. 25 June – 0800-1100 hrs.	Olympic Sailing Center, 24159 Kiel-Schilksee
WingFoil Racing	25 June – 1000-2000 hrs. 26 June – 0800-1100 hrs.	Marina, 24235 Stein

8.2 All classes except Olympic events:

On the first scheduled day of racing, a skippers meeting will be held at 0930 hrs. Details will be published in the Sailing Instructions.

8.3 Dates of racing, number of races and scheduled time of the warning signal for the first race for each class/Olympic event:

Classes / Olympic events	Racing Days	Warning Signal	Number of Races
CLASSES OF PART I / OLYMPIC EVENTS			
Mens's dinghy, Women's dinghy	21-25 June	21 June, 1300 hrs.	10 + medal race
Men's skiff, Women's skiff	21-25 June	21 June, 1300 hrs.	12 + medal race
Men's kite, Women's kite	21-25 June	21 June, 1300 hrs.	16 + medal series
29er	21-24 June	21 June, 1300 hrs.	13
CLASSES OF PART II / OLYMPIC EVENTS			
Mixed dinghy	25-29 June	25 June, 1300 hrs.	8 + medal race
Mixed multihull	25-29 June	25 June, 1300 hrs.	12 + medal race
2.4mR, Contender, Flying Dutchman, ILCA 4, ILCA 6 (open), J/24, J/70, 420	26-29 June	26 June, 1300 hrs.	11
Ok dinghy	26-29 June	26 June, 1300 hrs.	8
WingFoil Racing	26-29 June	26 June, 1300 hrs.	see NoR Addendum 'Wingfoil'

8.4 All classes except Olympic events:

On the last scheduled day of racing, no warning signal will be made after 1400 hrs.

8.5 Olympic events only:

On the last scheduled day of racing, no warning signal will be made after 1500 hrs.

9 [DP] EQUIPMENT AND EQUIPMENT INSPECTION

9.1 Boats shall provide any measurement certificates required by the relevant class rules or copies thereof.

9.2 The event is an international event for the purposes of RRS G1.1(b).

9.3 Boats/boards/kiteboards chartered or loaned for the event may carry national letters and a sail number of any other hull currently owned by the competitors.

KWC

Professional

Smart sanitary solutions –
created with expertise in
hygiene and functionality
for top sporting performance.

Experience perfection



www.kwc-professional.com

- 9.4 Boats/boards/kiteboards shall also comply with RRS 78.1 from 60 minutes before the first scheduled warning signal until the end of the protest time limit of the last race of the event.
- 9.5 Boats/boards/kiteboards may be inspected at any time.

10 VENUES

- 10.1 The event will be hosted:
 - 10.1.1 All classes/Olympic events except Men's kite, Women's kite and Wingfoil Racing:
Olympic Sailing Center, 24159 Kiel-Schilksee
 - 10.1.2 Men's kite, Women's kite and WingFoil Racing only:
Foling venue, 24235 Stein-Wendtorf (GPS: 54.433265, 10.282152)
- 10.2 The race office will be located:
 - 10.2.1 All classes/Olympic events except Men's kite, Women's kite and Wingfoil Racing:
Olympic Sailing Center, 24159 Kiel-Schilksee
 - 10.2.2 Men's kite, Women's kite and WingFoil Racing only:
Foling venue, Bottsand Marina, 24235 Wendtorf (54.420275, 10.291602)
- 10.3 Addendum 'Driving Map Kiel-Schilksee-Stein' shows the location of the event venues.

11 COURSES

The courses will be windward/leeward, triangle, slalom or trapezoid with optional finishing legs.

12 PENALTY SYSTEM

- 12.1 2.4mR, 29er, J/24, J/70, Men's skiff, Women's skiff and Mixed multihull only:
RRS 44.1 and P2.1 are changed so that the Two-Turns Penalty is replaced by the One-Turn Penalty.
- 12.2 Men's skiff, Women's skiff and Mixed multihull only:
In RRS 44.2 insert after the first sentence: 'However, if Mark 1a is set, a boat may delay taking a penalty for an incident in the zone around Mark 1 or on the leg between Mark 1 and Mark 1a, until leaving the Zone around Mark 1a.'
- 12.3 An international jury will be appointed in accordance with RRS 91(b). The right of appeal from its decisions is denied as provided in RRS 70.3 (a).

13 SCORING

- 13.1 One race for all fleets is required to be completed to constitute a series.
- 13.2 All classes/Olympic events except Men's kite, Women's kite and Wingfoil Racing:
When fewer than three races have been completed, a boat's series score shall be the total of her race scores.
When three or more races have been completed, a boat's series score shall be the total of her race scores excluding her worst score.
- 13.3 Olympic events only except Men's kite and Women's kite:
 - 13.3.1 RRS A4 is changed so that the points scored in the medal race are doubled, with any discretionary and standard penalties then added.
 - 13.3.2 RRS A5.2 is changed so that the points scored are based on the number of boats assigned to the medal race and then doubled.
 - 13.3.3 The score for the medal race shall not be excluded from the series score.
 - 13.3.4 For boats assigned to compete in the medal race, series-score ties shall be broken by the score for the medal race. This changes RRS A8. For tied boats with the same scores in the medal race, ties shall be broken applying RRS A8 to the opening series scores.

OFFIZIELLER PARTNER

DER KIELER-WOCHE
REGATTEN

MEER VON UNS AUF
DER SPONSORENMEILE
IN SCHILKSEE

pH-Wert

5,5

Einfach erfrischend Meer.

MIT WERTVOLLEN MEERSALZMINERALIEN

SEIFENFREIE PFLEGE FÜR TROCKENE UND EMPFINDLICHE HAUT

spendet Feuchtigkeit und hält die Haut
in Balance, mit 3 % Totes Meer Salz,
ohne Mikroplastik, Silikone und PEG



STABILISIERT DAS
HAUTMIKROBIOM

klinisch
pH-Wert
5,5
geprüft
sebamed[®]
WISSENSCHAFT FÜR GESUNDE HAUT
SEIT 1967



MADE IN GERMANY

0% Mikroplastik · 0% Silikone · 0% PEG · vegan

sebamed Produkte sind in über 400 Studien dermatologisch-klinisch getestet.

13.3.5 The boats assigned to compete in the medal race shall be scored highest in the event. This may not apply to a boat disqualified under RRS 69, the World Sailing Anti-Doping Code, World Sailing Betting and Anti-Corruption Code or World Sailing Disciplinary Code.

13.3.6 A boat assigned to compete in the medal race shall make a genuine effort to start, sail the course and finish. The penalty for a breach of this instruction will be ranking the boat tenth in the event. If there are two or more such boats, they will be ranked ninth and tenth, and so on, in order of their opening series ranks. This changes RRS A2.

13.4 Men's kite and Women's kite only:

NoR Addendum 'Kiteboarding', as published on the event website, applies.

13.5 Wingfoil Racing only:

NoR Addendum 'Wingfoil', as published on the event website, applies.

13.6 RRS 90.3(e) applies.

14 SUPPORT PERSONS AND SUPPORT PERSON VESSELS

14.1 All support person vessels and designated drivers shall be registered with the organizing authority no later than 15 June 2025 by registering online at the event website and paying the registration fee. The registration will be completed by registration on site (dates and times as stated in NoR 8.1). The organizing authority or the race committee may refuse registrations or accept later registrations at their sole discretion.

14.2 To help preserve the integrity and safety of the event and its participants, and as recommended by the Executive Board of the International Olympic Committee (IOC) with its resolution of 28 February 2022 and the related recommendations of World Sailing and Deutscher Segler-Verband e.V. (DSV) to all organizing authorities, registration shall not be open to support persons holding only Russian or Belarussian nationality. The organizing authority may amend this rule in the event of a change of circumstances or following any further World Sailing decisions on the situation with Russia and Belarus concerning the war against Ukraine in definition and with reference to UN Charta principles.

14.3 Support persons and support person vessels shall comply with local legislation and 'Event Support Team Regulations' published on the official notice board.

14.4 Registration fee:

14.4.1 The registration fees are as follows:

	Registration Fee (EUR) until 31 May 2025	Late Registration Fee (EUR) from 01 June until 15 June 2025
KIELER WOCHE, PART I (21 - 25 JUNE 2025)	100	130
KIELER WOCHE, PART II (26 - 29 JUNE 2025)	80	110

14.4.2 The registration fee includes the berthing fee for the scheduled racing days (NoR 8.3). In case of a longer berthing time, the support person vessel shall pay an additional fee for this period at the harbour master's office.

14.4.3 The registration fee does not include the craning fee for launching and haul-out.

14.4.4 The registration fee shall be paid via the online payment system (direct debit or credit card) upon registration, even if the support person vessel does not show up. The fee is non-refundable, except for the supported class/Olympic event being cancelled by the organizing authority or if the registration is refused.

14.5 Insurance:

14.5.1 Each support person vessel at the event shall be insured with a valid third-party liability insurance with a minimum cover of 2,000,000 EUR (or the equivalent) per incident and valid for the event.



Besser als Bares.

Wer nach einer spritzigen
Regatta nicht auf dem
Trockenen sitzen will, setzt
auf bargeldloses Bezahlen.



Kontaktlos bezahlen

Weil's um mehr als Geld geht
foerde-sparkasse.de



Förde Sparkasse

14.5.2 The organizing authority is not responsible for verifying the status or validity of the insurance certificates in accordance with NoR 14.5.1. However, the organizing authority reserves the right to verify the status or validity of insurance certificates to ensure protection for all persons involved in the event.

15 [SP] BERTHING

Unless otherwise instructed, boats/boards/kiteboards shall be kept in their assigned places in the boat park or harbour

16 [DP] HAUL-OUT RESTRICTIONS

Keelboats shall not be hauled out during the event except with and according to the terms of prior written permission of the technical committee.

17 [DP] DIVING EQUIPMENT AND PLASTIC POOLS

Underwater breathing apparatus and plastic pools or their equivalent shall not be used around keelboats between the preparatory signal of the first race and the end of the event.

18 [NP] [DP] MEDIA AND MARKETING RIGHTS, CAMERAS AND ELECTRONIC EQUIPMENT

- 18.1 By participation in the event, competitors as well as registered support persons (see NoR 14.1) or other persons legally bound to this Notice of Race shall comply with the 'Event Media and Marketing Rules' by Kieler Yacht-Club e.V., accessible under [<https://www.kyc.de/en/event-media-and-marketing-rules/>] and presented at registration on-site, and grant the organizing authority (namely Kieler Yacht- Club e.V., Kiellinie 70, 24105 Kiel; Norddeutscher Regatta Verein, Schöne Aussicht 37, 22085 Hamburg and Verein Seglerhaus am Wannsee e.V., Am Großen Wannsee 20a-26, 14109 Berlin) marketing and media rights in accordance with the 'Event Media and Marketing Rules'.
- 18.2 Boats/boards/kiteboards may be required to carry cameras, sound equipment, and positioning equipment as specified and supplied by the organizing authority.
- 18.3 The crew of the best three overall scored boats/boards/kiteboards of each class/Olympic event as well as the individual race winners may be required to attend a media press conference each day.
- 18.4 Competitors and/or registered support persons (see NoR 14.1) may be required to be available for interviews at the event.

19 DATA PROTECTION

The processing of personal data of the competitors and registered support persons (see NoR 14.1) or another person legally bound to this Notice of Race in connection with the event shall be carried out, on the one hand, for the performance of the contractual relationship on the basis of this Notice of Race between the competitor as well as the registered support person and/or another person legally bound to this Notice of Race and the organizing authority (led by Kieler Yacht-Club e.V. as data controller) pursuant to Art. 6 (1) S. 1 (b) GDPR. On the other hand, the processing of personal data of the competitor as well as the support person and/or another person legally bound to this Notice of Race is carried out in order to maintain the legitimate interests of the organizing authority. The further data protection provisions, including the rights of the competitor as well as the registered support person and/or another person legally bound to this Notice of Race under the GDPR, can be found in the Privacy Policy available at <https://www.kyc.de/en/privacy-policy/>.

HOL DIR DAS

KiMO

Ticket



POKER - BLACKJACK - ROULETTE

15€
IN JETONS

+

1 DREH AM
GLÜCKSRAD

**JETONS
COCKTAILS
GOODIES**



**FÜR
NUR 16€**

tägl. BIS 02:30 UHR

20 RISK STATEMENT / LIMITATION OF LIABILITY COGNOVITS CLAUSE

- 20.1 The responsibility for the decision to participate in a race or to continue with it is solely with the Person in Charge (as defined in RRS 46); to that extent the Person in Charge also accepts full responsibility for the crew. The Person in Charge is responsible for the qualification and the correct nautical conduct of the crew as well as for the suitability and the seaworthiness of the registered boat/board.
- 20.2 The responsibility for the decision to provide support to a competitor or to continue with it is solely with the registered support person (see NoR 14.1); to that extent the registered support person also accepts full responsibility for the crew on the support person vessel. The person in charge for the support person vessel is responsible for the qualification and the correct nautical conduct of the crew as well as for the suitability and the seaworthiness of the registered support person vessel.
- 20.3 The organizing authority (namely Kieler Yacht- Club e.V., Kiellinie 70, 24105 Kiel; Norddeutscher Regatta Verein, Schöne Aussicht 37, 22085 Hamburg and Verein Seglerhaus am Wannsee e.V., Am Großen Wannsee 20a-26, 14109 Berlin), its legal representatives and/or vicarious agents shall be liable for damages, irrespective of the legal basis, only in case of intent or gross negligence or — limited to the damage foreseeable and contract-typical at the time of the conclusion of contract — in case of violation of essential contractual obligations. Essential contractual obligations are those obligations which must be fulfilled in order to make the proper execution of the contract (in this case this Notice of Race) initially possible, the violation of which jeopardizes the attainment of the purpose of the contract, and the observance of which the competitor ordinarily relies on. The limitation of liability shall not apply to claims for compensation of damages due to injury to life, body, or health or due to other legally compulsory liability offenses.
- 20.4 The competitor as well as the registered support person (see NoR 14.1) or another person legally bound to this Notice of Race acknowledges that the event is an outdoor event, so that the implementation, course and schedule of the individual events and races can be influenced by the weather conditions. In addition, the organizing authority may be bound by the specifications and rules of national and international sports federations regarding the implementation of the events and races. The schedule stated in NoR 8 for events and races held during the event is therefore non-binding.
- 20.5 The organizing authority therefore reserves the right, in particular, in cases of force majeure or on grounds of administrative orders or for safety reasons, to make changes in the realization of the events and races of the event, to postpone the events and races of the event or to cancel the events and races of the event. This does not constitute any liability by the organizing authority towards the competitor and/or the registered support person (see NoR 14.1) and/or another person legally bound to this Notice of Race, if the reasons for the changes, postponement or the cancellation do not result from a wilful or grossly negligent behaviour of the organizing authority. The unlimited liability in case of the violation of essential contractual obligations or claims for compensation of damages due to injury to life, body, or health or due to other legally compulsory liability offenses in accordance with NoR 20.3 remains unaffected.
- 20.6 World Sailing's effective Racing Rules of Sailing (RRS) and all other rules as defined in RRS Definition 'Rule' (including all other documents governing the event listed in NoR 1.1) in the version that are current at the time of the event are to be complied with and are explicitly recognized.
- 20.7 German law applies with regard to the implementation of this Notice of Race.

Work at the heart of *change*

Setze auf neue Technologien und eine SAP-Karriere bei uns!

Entwickle mit uns maßgeschneiderte Kundenlösungen mit den neusten SAP-Cloud-Technologien und behalte dabei deine Karriere im Fokus!



Mehr
erfahren

accenture.de/karriere

Let there be change

- 20.8 Competitors and registered support persons (see NoR 14.1) shall present a signed and completed consent and declaration form at registration. For competitors and/or registered support persons (see NoR 14.1) under 18 years of age these forms shall be signed by the parents or guardians. The forms can be downloaded from the event website.

21 INSURANCE

- 21.1 Each boat/board/kiteboard at the event shall be insured with a valid third-party liability insurance with a minimum cover of 2,000,000 EUR (or the equivalent) per incident and valid for the event.
- 21.2 The organizing authority is not responsible for verifying the status or validity of the insurance certificates in accordance with NoR 21.1. However, the organizing authority reserves the right to verify the status or validity of insurance certificates to ensure protection for all persons involved in the event.

22 PRIZES

- 22.1 Prizes will be awarded to the best three overall scored boats/boards/kiteboards of each class/Olympic event.
- 22.2 29er Euro-Cup only:
Prizes will be awarded to the best three overall scored boats in the following scoring divisions:
- Top 3 Male boats
 - Top 3 Female boats
 - Top 3 Mixed boats
 - Top 3 U17 Male boat
 - Top 3 U17 Female boat
 - Top 3 U17 Mixed boat
 - Top over 19 boat
- 22.3 Additional special prizes and perpetual trophies for the individual classes/Olympic events will be published on the event website.
- 22.4 Every boat/board/kiteboard may pick up a Kiel Week plaque as a souvenir at registration.
- 22.5 Prizes not claimed at the prize giving ceremony will remain with the organizing authority.



So schmecken über
300 Jahre Erfahrung!

MOUNT GAY®
Barbados Rum **EST 1703**

TASTE THE GOOD LIFE



Drink responsibly



**SVB24.
COM**

SPOTTED ON SVB. DELIVERED ABOARD. SHIPSHAPE.



ONLINESHOP
IN 17
LANGUAGES

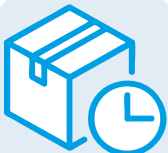


COMPETITIVE
PRICES

Europe's largest online shop
for sailing equipment –
unmatched gear,
delivered fast to sailors
worldwide.



NEED SPARE PARTS?
ORDER BY 2 PM
FOR SAME-DAY
DELIVERY FROM
BRANCH TO OUR
EXHIBITION STAND
IN SCHILKSEE!



FAST
WORLDWIDE
DELIVERY

SVB

1989

OFFICIAL PARTNER OF THE KIELER WOCHE 2025
VISIT US ON THE SPONSOR MILE IN SCHILKSEE

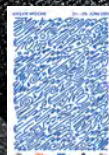


Tutima
GLASHÜTTE



M2 Seven Seas Titan

Die M2 Seven Seas Signal Yellow im 50 atm druckgeprüften Reintitangehäuse. Zuverlässigkeit, Präzision und optimale Ablesbarkeit. Geschaffen mit eben jener Perfektion, die das Attribut „Made in Glashütte“ zu einem Qualitätsversprechen von Weltrang gemacht hat. Erfahren Sie mehr auf www.tutima.com.



Offizieller Zeitnehmer
der Kieler-Woche-
Regatten seit 2005

FÜR DIE GEMACHT, DIE MACHEN.

Dieses und andere Tutima-Modelle erhalten Sie bei:



MAHLBERG

Kiel | Holstenstr. 39 | Tel. 0431 980709-0 | kiel@j-m-m.de

Notice of Race - Offshore

APPLIES TO THE FOLLOWING OFFSHORE EVENTS: AALREGATTA, KIEL CUP, SENATSPREIS, SILBERNES BAND AND INTERNATIONAL GERMAN CHAMPIONSHIP

The offshore regattas comprise our 4 traditional and renowned races: “Aalregatta” (Kiel-Eckernförde), “Kiel Cup” (up to 9 Inshore Races), “Senatspreis” (2 day-races), and “Silbernes Band” (long offshore race over night). Each regatta is a separate event and can be entered individually, though we welcome participation in all.

Additionally, three (3) “International German Championship in Offshore Sailing” (IDM) titles will be awarded: Offshore Champion, Inshore Champion, Double-Handed Champion. Each boat has the option to participate in 2 of these 3 championships.

Timeline

	21 June Saturday	22 June Sunday	23 June Monday	24 June Tuesday	25 June Wednesday	26 June Thursday	27 June Friday	28 June Saturday	29 June Sunday
2 Coastals	Aalregatta								
Inshore Races		Kiel Cup							
2 Coastals					Senatspreis				
Overnight Race							Silberbes Band		
<hr/>									
IDM Inshore	Aal KI-ECK	Kiel Cup							
IDM Offshore	Aal KI-ECK						Silberbes Band		
IDM Double Handed					Senatspreis		Silberbes Band		

IDM Inshore

Consists of 1 coastal race (“Aalregatta” from Kiel to Eckernförde on Saturday, 21 June 2025) and up to 9 windward/leeward races (“Kiel Cup” from Sunday to Tuesday on Eckernförde Bay and on Stollergrund).“

IDM Offshore

Consists of 1 coastal race (“Aalregatta” from Kiel to Eckernförde on Saturday, 21 June 2025) and 1 long offshore “overnight” race (“Silbernes Band” starting on Friday evening).

IDM DH (Double Handed)

Consists of 2 coastal races (“Senatspreis” on Wednesday and Thursday) and 1 long offshore “overnight” race (“Silbernes Band” starting on Friday evening).

Entry Requirements

	Aalregatta	Kiel Cup	Senatspreis	Silbernes Band	IDM Inshore	IDM Offshore	IDM Double Handed
ORC-Certificate (recommended, unlimited participation)							
No Certificate (yardstick will be assigned)							
Minimum Safety Requirements (OSR)	4	4	4	3	4	3	3
Full Crew							
Double Handed							

DER HORIZONT – DAS SCHÖNSTE ZIEL.

6 AUSGABEN AB 27 €



**JETZT ABO
SICHERN...**

jetzt-lesen.link/yacht-05900
+49 (0) 521-55 99 55

Falls Sie telefonisch bestellen, geben Sie bitte die Kampagne 05900 an.



The notation '[NP]' in a rule means that a boat may not protest another boat for breaking that rule. This changes RRS 60.1.

1 RULES

1.1 The event is governed by the rules as defined in The Racing Rules of Sailing (RRS). Other documents under RRS Definition 'rule' (g) include:

1.1.1 [DP] World Sailing Offshore Special Regulations (OSR)

Event	OSR Category
AALREGATTA (only)	4
IDM INSHORE (inkl. Aalregatta and Kiel Cup)	4
IDM OFFSHORE (inkl. Aalregatta and Silbernes Band)	3
IDM DOUBLE HANDED (inkl. Senatspreis and Silbernes Band)	3
SENATSPREIS (only)	4
SILBERNES BAND (only)	3
KIEL CUP (only)	4

- Additional Regulation for AALREGATTA: OSR for Category 4 applies, with the exception that boats sailing without lifelines according to their class regulations are permitted. This changes OSR 3.14.
- [DP] Additional Regulation for SILBERNES BAND, IDM Offshore, IDM Double Handed: All boats must have an AIS transponder. The transmission of the AIS signal shall be enabled. This changes OSR3.29.07. The race committee may approve exceptions upon written request made no later than the dates and times of registration for the respective event as stated in NoR 7.1.
- Single Handed sailing is not permitted. Double Handed boats must sail with two persons on board.

1.2 The latest version of the following rules applies additionally:

1.2.1 For Monohulls holding an ORC certificate only: IMS Rules & ORC Rating System Rules

1.2.2 For Monohulls not holding an ORC certificate: Yardstick Rules, provided by the German Sailing Federation (DSV)

1.2.3 For Multihulls only: Texel Rating rules

1.3 RRS Appendix T, Arbitration, applies.

1.4 AALREGATTA only: The race committee may assign an individual event sail number to a boat, if no sail number has been allotted to her or if two boats have been allotted the same sail numbers. This changes RRS 77 and G1.1.

1.5 Double Handed only: A boat's standing rigging, running rigging, and spars shall be adjusted and operated only by the power provided by the crew. However, autopilots may be used to adjust and operate moveable hull appendages. The autopilots shall only use measurements of weather, wind, or sea surface within 100 millimetres of sensors that are mounted on the boat, and therefore the use of cameras, lidar, sonar, or radar to measure the sea surface surrounding the boat is prohibited.

1.6 World Sailing Appendix TS, Traffic Separation Schemes, Version 3 Section B applies to the following Traffic Separation Schemes (TSS)/areas: TSS Off 'Kiel Lighthouse', the entrance to the Kiel Canal and all cross-restricted areas shown in nautical charts. The applicable version of Appendix TS Section B and the TSS/areas are shown in Addendum 'Traffic Separation Schemes'.



PROOF IS ON THE PODIUM

There is no one better to trust to get you on the podium for this Kieler Woche than North Sails. Talk to your local expert for bespoke sail optimisation. Our on-site regatta and overnight repair service is ready to keep you racing.



Talk To An Expert
northsails.com

- 1.7 Event Support Team Regulations (ESTR), as published on the [official notice board](#).
- 1.8 Event Media and Marketing Rules (EMMR), as published on the KYC website.
- 1.9 The national authority prescriptions of the German Sailing Federation (DSV) applies and will be published on the official notice board.
- 1.10 If there is a conflict between languages the English text takes precedence. For the national prescriptions of the German Sailing Federation (DSV) the German text takes precedence.

2 SAILING INSTRUCTIONS

The Sailing Instructions will be available on the [event website](#) from June 2025 on.

3 COMMUNICATION

- 3.1 The official notice board is located on the [event website](#).
- 3.2 [NP][DP] The race committee will provide information to competitors via VHF radio. The VHF channels will be announced in the Sailing Instructions. Listening watch is mandatory for all boats while afloat.
- 3.3 Notwithstanding 3.1 of this Notice of Race, before a Warning Signal the Race Committee may make oral changes via VHF to the Sailing Instructions. This changes RRS 90.2 (c). The procedure will be described in the Sailing Instructions.
- 3.4 [DP] While racing, except in an emergency, when answering inquiries of the race committee or when using equipment provided by the organizing authority, a boat shall not make voice or data transmissions. Additionally, a boat shall not receive voice or data communication that is not available to all boats.

4 ELIGIBILITY AND ENTRY

- 4.1 The events are open for the following boats:

Event	Dates	Format / Eligibility				
		Fully Crewed		Double Handed		Multihull
		ORC Certificate	No ORC Certificate (Yardstick)	ORC Certificate	No ORC Certificate (Yardstick)	
AALREGATTA (only)	21-22 June	yes	yes	yes	yes	yes
IDM INSHORE (inkl. Aalregatta and Kiel Cup)	21-24 June	yes				
IDM OFFSHORE (inkl. Aalregatta and Silbernes Band)	21 and 27-28 June	yes		yes		
IDM DOUBLE HANDED (inkl. Senatspreis and Silbernes Band)	25-28 June			yes		
SENATSPREIS (only)	25-26 June			yes	yes	
SILBERNES BAND (only)	27-28 June	yes	yes	yes	yes	

- 4.2 The organizing authority reserves the right to split the boats in all events into rating groups/ classes according to the recommendations of DSV and ORC, if the number of boats entered so requires. Details will be published in the Sailing Instructions, if applicable.

Cheers! Auf die Kieler Woche!

Voller Geschmack.
Null Alkohol.



- 4.3 To help preserve the integrity and safety of the event and its participants, and as recommended by the Executive Board of the International Olympic Committee (IOC) with its resolution of 28 February 2022 and the related recommendations of World Sailing and Deutscher Segler-Verband e.V. (DSV) to all organizing authorities, entries shall not be open to boats representing Russia or Belarus and/or competitors holding only Russian or Belarussian nationality. The organizing authority may amend this rule in the event of a change of circumstances or following any further World Sailing decisions on the situation with Russia and Belarus concerning the war against Ukraine in definition and with reference to UN Charta principles.
- 4.4 Eligible boats may enter no later than 15 June 2025 by registering online at the event website, paying the entry fee and submitting a crew-list via the event website. Entry will be completed by registration on site.
- 4.5 The organizing authority may cancel an event if less than 15 boats per event or 8 boats per rating group have entered by 30 April 2025.
- 4.6 AALREGATTA only: The maximum number of entries of the Event Aalregatta is 250 boats.

5 FEES

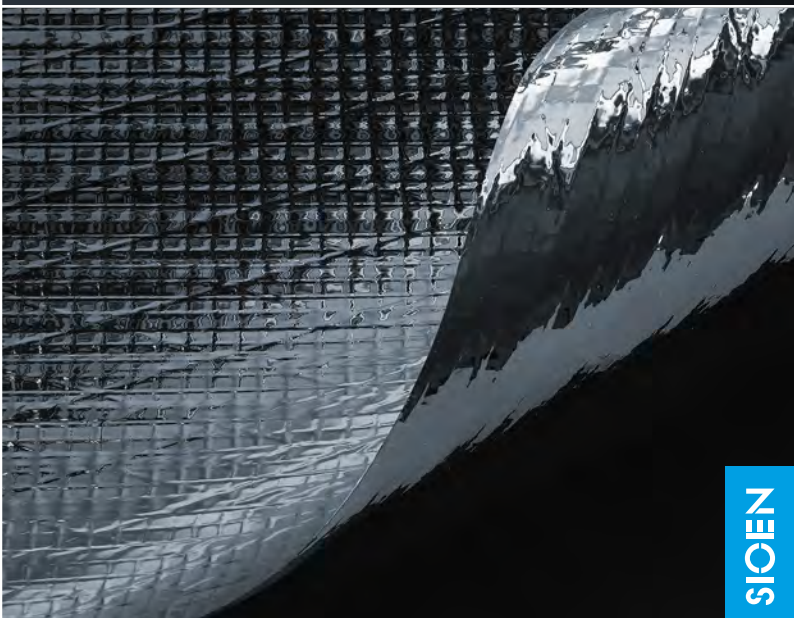
- 5.1 Entry fees are as follows :

Event	Early Entry Fee (EUR) until 30 April 2025	Entry Fee (EUR) from 01 May until 31 May 2025	Late Entry Fee (EUR) from 01 June
AALREGATTA (ONLY)			
Boat Length > 14,50 Meter, Multihull 40 ft. and longer	175	225	300
Boat Length $\geq 10,50 \leq 14,50$ Meter, Multihull 30-39 ft.	150	200	275
Boat Length < 10,50 Meter, Multihull < 29ft.	125	175	250
IDM INSHORE (INCL. AALREGATTA AND KIEL CUP)			
Boat Length > 14,50 Meter	595	695	845
Boat Length $\geq 10,50 \leq 14,50$ Meter	470	570	720
Boat Length < 10,50 Meter	345	445	595
IDM OFFSHORE (INCL. AALREGATTA AND SILBERNES BAND)			
Boat Length > 14,50 Meter	300	375	475
Boat Length $\geq 10,50 \leq 14,50$ Meter	250	325	425
Boat Length < 10,50 Meter	200	275	375
IDM DOUBLE HANDED (INCL. SENATSPREIS AND SILBERNES BAND)			
Boat Length > 14,50 Meter	325	400	500
Boat Length $\geq 10,50 \leq 14,50$ Meter	285	360	460
Boat Length < 10,50 Meter	235	310	410
SENATSPREIS (ONLY)			
Boat Length > 14,50 Meter	175	225	300
Boat Length $\geq 10,50 \leq 14,50$ Meter	150	200	275
Boat Length < 10,50 Meter	125	175	250
SILBERNES BAND (ONLY)			
Boat Length > 14,50 Meter	210	260	335
Boat Length $\geq 10,50 \leq 14,50$ Meter	185	235	310
Boat Length < 10,50 Meter	160	210	285

PRECISION IN BLACK



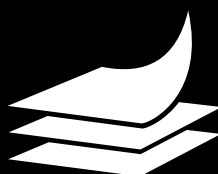
onyx



NEOS



The leading sailcloth manufacturer.
Innovation since 1966
dimension-polyant.com



*dimension
polyant*

- 5.2 The entry fee includes the berthing fee for the scheduled racing days (NoR 7.4). In case of a longer berthing time, the boat shall pay an additional fee for this period at the harbour master's office.
- 5.3 The entry fee does not include the craning fee for launching and haul-out.
- 5.4 The entry fee shall be paid via the online payment system (direct debit or credit card) upon entering, even if the entry is cancelled later or the boat does not show up. The fee is non-refundable, except for the event or rating group/class being cancelled by the organizing authority or if the entry is rejected or cancelled under RRS 76.1.

6 [DP] ADVERTISING

- 6.1 Boats may be required to display event advertising chosen and supplied by the organizing authority. Boats shall not display advertising from previous events.
- 6.2 It is prohibited to distribute and display advertising material both in the area of the shore facilities and jetties or to attach such material separately on the boats and harbour facilities, unless prior permission has been given by the organizing authority.

7 SCHEDULE, FORMAT AND COURSES

7.1 Registration:

Event	Registration	Location
AALREGATTA (only)	20 June – 1500-2100 hrs. 21 June – 0800-1000 hrs.	Kieler Yacht-Club, Kiellinie 70, Kiel-Düsternbrook
IDM INSHORE (inkl. Aalregatta and Kiel Cup)	20 June – 1500-2100 hrs. 21 June – 0800-1000 hrs.	Kieler Yacht-Club, Kiellinie 70, Kiel-Düsternbrook
IDM OFFSHORE (inkl. Aalregatta and Silbernes Band)	20 June – 1500-2100 hrs. 21 June – 0800-1000 hrs.	Kieler Yacht-Club, Kiellinie 70, Kiel-Düsternbrook
IDM DOUBLE HANDED (inkl. Senatspreis and Silbernes Band)	24 June – 1700-2000 hrs.	Olympic Sailing Center, Kiel-Schilksee
SENATSPREIS (only)	24 June – 1700-2000 hrs.	Olympic Sailing Center, Kiel-Schilksee
SILBERNES BAND (only)	27 June – 1400-1600 hrs.	Olympic Sailing Center, Kiel-Schilksee

- 7.2 There will be an online Skippersbriefing for all 3 parts of the IDM on Friday, June 20 at 2000 hrs. Additional information may be provided via VHF before the warning signal while afloat.
- 7.3 Scheduled time of the warning signals for the (first) race:

Event	Racing Days	Warning Signal for the (first) Race
AALREGATTA (only)	Saturday, 21 June	0900 hrs.
IDM INSHORE (inkl. Aalregatta and Kiel Cup)	Saturday 21 June to 24 June	21 June 0900 hrs and from 22 June 1100 hrs.
IDM OFFSHORE (inkl. Aalregatta and Silbernes Band)	Saturday, 21 June and 27-28 June	21 June 0900 hrs and 27 June 1900 hrs.
IDM DOUBLE HANDED (inkl. Senatspreis and Silbernes Band)	25 - 26 June and 27 - 28 June	25 and 26 June 1100 hrs. and 27 June 1900 hrs.
SENATSPREIS (only)	25 - 26 June	25 and 26 June 1100 hrs.
SILBERNES BAND (only)	27 - 28 June	1900 hrs.



BLACKROLL®

Wir sind Teil der Kieler Woche!

Kommt uns besuchen in Schilksee.

**Event-
Rabatt &
Verlosung!**

In der Sponsoren Area in Schilksee findest du unseren BLACKROLL® Truck und unser Team. Hier kannst du die neusten Innovationen im Thema Regeneration kennen lernen und dich von unserem Team beraten lassen.



Schon mal von dem RECOVERY PILLOW gehört?

All unsere Produkte gibt es bei uns am Stand zum testen und ausprobieren. Wir bieten dir auch einen exklusiven Event-Rabatt zum shoppen an.

Müde Beine nach einem langen Tag auf der bunten Kieler Woche?

Komm vorbei und teste unsere COMPRESSION BOOTS und lass dich einen Moment mit einer kostenlosen Lymphdrainage verwöhnen.

Wir freuen und auf dich!



7.4 Kiel Cup only:

On the last scheduled day of racing, no warning signal will be made after 1500 hrs.

7.5 Format:

Event	Format	Number of Races
AALREGATTA (only)	Two (2) Coastal Races	2
IDM INSHORE (inkl. Aalregatta and Kiel Cup)	One (1) Coastal Race and Nine (9) Windward/Leeward Races	10
IDM OFFSHORE (inkl. Aalregatta and Silbernes Band)	One (1) Coastal Race and One (1) Offshore Races	2
IDM DOUBLE HANDED (inkl. Senatspreis and Silbernes Band)	Two (2) Coastal Races and One (1) Offshore Race	3
SENATSPREIS (only)	Two (2) Coastal Races	2
SILBERNES BAND (only)	One (1) Offshore Race	1

The format may be changed depending on the weather and wind conditions or situations of force majeure.

7.6 The courses will be defined in the Sailing Instructions.

8 [DP] MEASUREMENT AND EQUIPMENT INSPECTION

8.1 [NP] ORC boats only:

8.1.1 Each boat shall have a valid ORC-International, ORC-Club and for the Double Handed Races a ORC-DH certificate issued up to 15 June 2025 which shall be send to offshore@kyc.de in pdf-format no later than 16 June 2025. The time limit may be extended upon confirmation by the national rating office together with the event class measurer issuing the certificate for the respective boat. This changes RRS 78.2.

8.1.2 No changes shall be made on ORC-certificates after 15 June 2025 unless prescribed and approved by the technical committee in correcting any error that may be found in boats certificate before or during the pre-race equipment inspection and before the start of the first race.

8.2 Boats shall also comply with RRS 78.1 from 60 minutes before the first scheduled warning signal until the end of the protest time limit of the last race of the event.

8.3 Boats may be inspected at any time. Measurement and rules compliance inspections will be carried out throughout the event with emphasis on boats well placed in the scoring.

9 VENUE

9.1 The events will be hosted at the following venues:

9.1.1 Aalregatta:

9.1.1.1 Race Kiel-Eckernförde: yacht-harbour Düsternbrook

9.1.1.2 Race Eckernförde-Kiel: yacht-harbour Segelclub Eckernförde

9.1.2 IDM Inshore and IDM Offshore

9.1.2.1 Race Kiel-Eckernförde: yacht-harbour Düsternbrook and yacht-harbour Segelclub Eckernförde

9.1.2.2 All other races Olympic Sailing Center, Kiel-Schilksee

9.1.3 All other events:

9.1.3.1 Olympic Sailing Center, Kiel-Schilksee



YES, POWER
CAN BE THIS
COMPACT.

THE NEW ELECTRIC TRAVEL XP.
OFFERS EXTRA POWER, JUST IN CASE.

With 1600 W of pure electric power, the Travel XP is one of the most powerful outboards with integrated battery available on the market. With 44% more thrust than the regular Travel motor, it gives you exactly the power you need. Experience the pure power of nature, even in demanding conditions.



- 9.2** The locations of the race offices will be as follows:
- 9.2.1** Aalregatta Kiel – Eckernförde, IDM Inshore (Race Kiel-Eckernförde), and IDM Offshore (Race Kiel-Eckernförde):
In front of Kieler Yacht-Club e.V., Kiellinie 70, 24105 Kiel until the first warning signal and close to the restaurant of the Segelclub Eckernförde e.V., Am Ort 2, 24340 Eckernförde after finishing.
 - 9.2.2** Aalregatta Eckernförde – Kiel:
Close to the restaurant of the Segelclub Eckernförde, am Ort 2, 24340 Eckernförde until the first warning signal, and after finishing at the Olympic Sailing Center, 24159 Kiel-Schilksee
 - 9.2.3** All other events:
At the Olympic Sailing Center, 24159 Kiel-Schilksee
- 9.3** The racing areas will be as follows:
- 9.3.1** AALREGATTA:
Kiel Fjord, Eckernförde Bay
 - 9.3.2** IDM Inshore
Kiel Fjord, Eckernförde Bay, and Racing Area Alpha (Stollergrund), as shown in the Addendum ‘Racing Areas - Offshore’
 - 9.3.3** IDM Double Handed
Kiel bay / western Baltic Sea, waters south of Denmark, Danish Islands (entrance Little Belt, Svendborg Sund, south of island Fyn, around the island of Langeland, south of bridge of Great Belt)
 - 9.3.4** IDM Offshore
Kiel Fjord, Eckernförde Bay, Danish Islands (entrance Little Belt, Svendborg Sund, south of island Fyn, around the island of Langeland, south of bridge of Great Belt)
 - 9.3.5** SENATSPREIS (only):
Kiel bay / western Baltic Sea, waters south of Denmark
 - 9.3.6** SILBERNES BAND (only):
Kiel bay / western Baltic Sea, Danish Islands (entrance Little Belt, Svendborg Sund, south of island Fyn, around the island of Langeland, south of bridge of Great Belt)

10 PENALTY SYSTEM

- 10.1** Rule 44.1 is changed so that the Two-Turns Penalty is replaced by the One-Turn Penalty.
- 10.2** An international jury will be appointed in accordance with RRS 91(b). The right of appeal from an international jury decision is denied as provided in RRS 70.3 (a).

11 SCORING

- 11.1** The decision on the scoring system and scoring parameters used will be at the sole discretion of the race committee and together with length of course, directions of leg and the wind speed will not be grounds for request for redress by a boat. This changes RRS 61.1(a). The recommendations of the rating offices will be taken into consideration.
- 11.2** ORC International only:
Boats will be scored separately, but there may be an additional combined scoring with boats entered in ORC Club.
- 11.3** ORC Club only:
Boats will be scored separately, but there may be an additional combined scoring with boats entered in ORC International and/or Yardstick boats.



Bild: iStock, PEDRE

Aus Verantwortung gegenüber Mensch und Natur

Als einer der weltweit führenden Dienstleister für Recycling, Service und Wasser tragen wir dazu bei, die Welt von heute für Generationen von morgen zu erhalten. Wir gewinnen nicht nur jährlich 30 Millionen Tonnen Wertstoffe zurück, sondern erbringen auch umfassende Dienstleistungen für Industrie, Gewerbe und Kommunen. Das ist praktizierter Klima- und Ressourcenschutz. Zum Wohle aller. Im Auftrag der Zukunft.

- 11.4** Yardstick / without ORC certificate only:
- 11.4.1** A committee of the organizing authority will assign the Yardstick value for every boat not holding an ORC-certificate. The assigned Yardstick values will be published on the event website. A request for redress based on the assigned Yardstick values shall be delivered to the race office no later than the starting signal of the requesting boat. This changes RRS 61.2.
- 11.4.2** Additionally, the race committee will provide estimated measurement data to allow for a combined scoring on the basis of ORC data.
- 11.5** Multihulls only:
The Texel Rating rules are used to determine the time correction factor for multihulls. If there is no factor a committee of the organizing authority will assign the factor. The recommendations of a class representative will be considered. The factors will be published on the event website. A request for redress based on the assigned factors shall be delivered to the race office no later than the starting signal of the requesting boat. This changes RRS 61.2.
- 11.6** Double Handed except Senatspreis:
Double Handed boats may be combined with Fully Crewed boats in the same rating group/class. If Double Handed boats are combined with Fully Crewed boats there will be separate Double Handed results in the corresponding Double Handed rating groups/classes.
- 11.7** Scoring format:
- 11.7.1** Aalregatta:
The Aalregatta consist of two races (Kiel – Eckernförde; Eckernförde – Kiel) which are scored as different events. There will be no series score.
Results will be determined by corrected times calculated by the single ToT (All purpose) value or Polar Curve Scoring All purpose course method
- 11.7.2** IDM Inshore:
At least three (3) races are required to be completed to constitute a series. When fewer than five (5) races have been completed, a boat's series score shall be the total of her race scores. When three (3) or more races have been completed, a boat's series score shall be the total of her race scores excluding her worst score. The coastal race (Aalregatta) cannot be discarded. The windward/leeward races results will be determined by corrected times calculated by the Polar Curve Scoring and constructed course scoring method.
- 11.7.3** IDM Offshore: At least the long offshore race is required to be completed to constitute a series.
Results will be determined by corrected times calculated by the single ToT (All purpose) value or Polar Curve Scoring All purpose course method. The scoring factor for the long offshore race (Silbernes Band) will be 1.5, and for the coastal race (Aalregatta) the factor will be 1.0.
- 11.7.4** IDM Double Handed: At least one (1) coastal race and the long offshore race is required to be completed to constitute a series. The scoring factor for the long offshore race (Silbernes Band) will be 1.5, and for the coastal races (Senatspreis) the factor will be 1.0. Results will be determined by corrected times calculated by the single ToT (All purpose) value or Polar Curve Scoring All purpose course method.
- 11.7.5** Senatspreis:
The Senatspreis consists of two races. One race is required to be completed to constitute the series. No score shall be excluded.
Results will be determined by corrected times calculated by the single ToT (All purpose) value or Polar Curve Scoring All purpose course method.

Es zählt, was unter der Oberfläche ist

Unsere Antifoulings schützen nicht nur Ihren Rumpf vor Bewuchs, sie sollen auch die Ausbreitung invasiver Arten in lokale Gewässer verhindern. Wir möchten Ihnen dabei helfen, die Gewässer, die Ihnen Freude und Entspannung bieten, zu bewahren.

Jede Dose von uns liefert Ihnen konstante Leistung und Schutz, denn in der Dose stecken über 160 Jahre Spitzenwissenschaft, Technologie und Fachwissen.

Unsere Leidenschaft ist es Eignern, Kapitänen und Bootbauern den bestmöglichen Rumpfschutz anzubieten und wir teilen alle eine Leidenschaft: den Wassersport.

Sie können von jedem International® Yachtfarben-Produkt nur das Beste erwarten, das nicht nur Ihr Boot schützt, sondern Ihnen die Sicherheit und Ruhe gibt, damit Sie die Welt erkunden können.

Biozidprodukte vorsichtig verwenden. Vor Gebrauch stets Etikett und Produktinformation lesen.



**Relentless performance
for every yacht, everywhere, every time.**

OFFIZIELLER FÖRDERER

**SEGELSPORT
DEUTSCHLAND**



**DEUTSCHER
SEGLER-
VERBAND**

 **International**

international-yachtpaint.com

AkzoNobel

12 SUPPORT PERSONS AND SUPPORT PERSON VESSELS

- 12.1 All support person vessels and designated drivers shall be registered with the organizing authority no later than 15 June 2025 by registering online at the event website and paying the registration fee. The registration will be completed by registration on site (dates and times as stated in NoR 7.1). The organizing authority or race committee may refuse registrations and accept later registrations at their sole discretion.
- 12.2 To help preserve the integrity and safety of the event and its participants, and as recommended by the Executive Board of the International Olympic Committee (IOC) with its resolution of 28 February 2022 and the related recommendations of World Sailing and Deutscher Segler-Verband e.V. (DSV) to all organizing authorities, registration shall not be open to support persons holding only Russian or Belarussian nationality. The organizing authority may amend this rule in the event of a change of circumstances or following any further World Sailing decisions on the situation with Russia and Belarus concerning the war against Ukraine in definition and with reference to UN Charta principles.
- 12.3 Support persons and support person vessels shall comply with local legislation and 'Event Support Team Regulations' published on the event website.
- 12.4 Registration fee:

12.4.1 The registration fees are as follows:

	Entry Fee (EUR) until 31 May 2025	Late Entry Fee (EUR) from 01 June until 15 June 2025
KIEL WEEK		
Support person vessel	80	130

12.4.2 The registration fee includes the berthing fee for the scheduled racing days (NoR 7.4). In case of a longer berthing time, the support person vessel shall pay an additional fee for this period at the harbour master's office. The registration fee does not include in and out craning.

12.4.3 The registration fee does not include in and out craning.

12.4.4 The registration fee shall be paid via the online payment system (direct debit or credit card) upon registration, even if the support person vessel does not show up. The fee is non-refundable, except for the supported event being cancelled by the organizing authority or if the registration is refused.

12.5 Insurance:

12.5.1 Each support person vessel at the event shall be insured with a valid third-party liability insurance with a minimum cover of 3,000,000 EUR (or the equivalent) per incident and valid for the event.

12.5.2 The organizing authority is not responsible for verifying the status or validity of the insurance certificates in accordance with NoR 12.5.1. However, the organizing authority reserves the right to verify the status or validity of insurance certificates to ensure protection for all persons involved in the event.





PERFORMANCE DYNAMIC SAFETY

High Tech Yacht Ropes
Made in Germany

www.liros.com



Official
Sponsor
of
Kieler
Woche
2025



GERMAN
SAILING
TEAM



AUSTRALIAN
SAILING TEAM

13 NAUTICAL CHARTS

The following nautical charts of the NV Charts Group are utilized as a reference in the Sailing Instructions: Rund Fünen / Kieler Bucht Serie 1.

14 [DP] BERTHING

Boats shall be kept in their assigned places while they are in the harbour.

15 [DP] HAUL-OUT RESTRICTIONS

Boats shall not be hauled out during the event except with and according to the terms of written permission by the technical committee.

16 [DP] DIVING EQUIPMENT AND PLASTIC POOLS

Underwater breathing apparatus and plastic pools or their equivalent shall not be used around boats between the preparatory signal of the first race and the end of the event.

17 [NP] [DP] MEDIA AND MARKETING RIGHTS, CAMERAS AND ELECTRONIC EQUIPMENT

- 17.1 By participation in the event, competitors as well as registered support persons (see NoR 14.1) or other persons legally bound to this Notice of Race shall comply with the 'Event Media and Marketing Rules' by Kieler Yacht-Club e.V., accessible under [<https://www.kyc.de/en/event-media-and-marketing-rules/>] and presented at registration on-site, and grant the organizing authority (namely Kieler Yacht-Club e.V., Kiellinie 70, 24105 Kiel; Norddeutscher Regatta Verein, Schöne Aussicht 37, 22085 Hamburg and Verein Seglerhaus am Wannsee e.V., Am Großen Wannsee 20a-26, 14109 Berlin) marketing and media rights in accordance with the 'Event Media and Marketing Rules'.
- 17.2 Boats/boards/kiteboards may be required to carry cameras, sound equipment, and positioning equipment as specified and supplied by the organizing authority.
- 17.3 The crew of the best three overall scored boats/boards/kiteboards of each class/Olympic event as well as the individual race winners may be required to attend a media press conference each day.
- 17.4 Competitors and/or registered support persons (see NoR 14.1) may be required to be available for interviews at the event.

18 DATA PROTECTION

The processing of personal data of the competitors and registered support persons (see NoR 14.1) or another person legally bound to this Notice of Race in connection with the event shall be carried out, on the one hand, for the performance of the contractual relationship on the basis of this Notice of Race between the competitor as well as the registered support person and/or another person legally bound to this Notice of Race and the organizing authority (led by Kieler Yacht-Club e.V. as data controller) pursuant to Art. 6 (1) S. 1 (b) GDPR. On the other hand, the processing of personal data of the competitor as well as the support person and/or another person legally bound to this Notice of Race is carried out in order to maintain the legitimate interests of the organizing authority. The further data protection provisions, including the rights of the competitor as well as the registered support person and/or another person legally bound to this Notice of Race under the GDPR, can be found in the Privacy Policy available at <https://www.kyc.de/en/privacy-policy/>.

Der Sound der Kieler Woche

Das ZÖLLNER Makrofon eröffnet die Kieler Woche – das ZETFON startet die Regatten.



ZÖLLNER
signal system technologies

zoellner.de

10% Rabatt

während der Kieler Woche auf unsere nautischen Instrumente:
zoellner.de/de/kieler-woche



©Lh Kiel

19 RISK STATEMENT / LIMITATION OF LIABILITY COGNOVITS CLAUSE

- 19.1 The responsibility for the decision to participate in a race or to continue with it is solely with the Person in Charge (as defined in RRS 46); to that extent the Person in Charge also accepts full responsibility for the crew. The Person in Charge is responsible for the qualification and the correct nautical conduct of the crew as well as for the suitability and the seaworthiness of the registered boat/board.
- 19.2 The responsibility for the decision to provide support to a competitor or to continue with it is solely with the registered support person (see NoR 14.1); to that extent the registered support person also accepts full responsibility for the crew on the support person vessel. The person in charge for the support person vessel is responsible for the qualification and the correct nautical conduct of the crew as well as for the suitability and the seaworthiness of the registered support person vessel.
- 19.3 The organizing authority (namely Kieler Yacht- Club e.V., Kiellinie 70, 24105 Kiel; Norddeutscher Regatta Verein, Schöne Aussicht 37, 22085 Hamburg and Verein Seglerhaus am Wannsee e.V., Am Großen Wannsee 20a-26, 14109 Berlin), its legal representatives and/or vicarious agents shall be liable for damages, irrespective of the legal basis, only in case of intent or gross negligence or — limited to the damage foreseeable and contract-typical at the time of the conclusion of contract — in case of violation of essential contractual obligations. Essential contractual obligations are those obligations which must be fulfilled in order to make the proper execution of the contract (in this case this Notice of Race) initially possible, the violation of which jeopardizes the attainment of the purpose of the contract, and the observance of which the competitor ordinarily relies on. The limitation of liability shall not apply to claims for compensation of damages due to injury to life, body, or health or due to other legally compulsory liability offenses.
- 19.4 The competitor as well as the registered support person (see NoR 14.1) or another person legally bound to this Notice of Race acknowledges that the event is an outdoor event, so that the implementation, course and schedule of the individual events and races can be influenced by the weather conditions. In addition, the organizing authority may be bound by the specifications and rules of national and international sports federations regarding the implementation of the events and races. The schedule stated in NoR 8 for events and races held during the event is therefore non-binding.
- 19.5 The organizing authority therefore reserves the right, in particular, in cases of force majeure or on grounds of administrative orders or for safety reasons, to make changes in the realization of the events and races of the event, to postpone the events and races of the event or to cancel the events and races of the event. This does not constitute any liability by the organizing authority towards the competitor and/or the registered support person (see NoR 14.1) and/or another person legally bound to this Notice of Race, if the reasons for the changes, postponement or the cancellation do not result from a wilful or grossly negligent behaviour of the organizing authority. The unlimited liability in case of the violation of essential contractual obligations or claims for compensation of damages due to injury to life, body, or health or due to other legally compulsory liability offenses in accordance with NoR 20.3 remains unaffected.
- 19.6 World Sailing's effective Racing Rules of Sailing (RRS) and all other rules as defined in RRS Definition 'Rule' (including all other documents governing the event listed in NoR 1.1) in the version that are current at the time of the event are to be complied with and are explicitly recognized.



#sh_wlan



Eine Digitalisierungsinitiative der
Sparkassen Schleswig-Holstein

#sh_wlan

- kein Account / Passwort
 - kein Daten- / Zeitlimit
 - automatischer Re-Login
- = einfach digitaler Leben**

**Auch auf
der Kieler
Woche!**

EINFACH EINFACH

Kostenloses WLAN für Schleswig-Holstein

www.sh-wlan.de

- 19.7 German law applies with regard to the implementation of this Notice of Race.
- 19.8 Competitors and registered support persons (see NoR 14.1) shall present a signed and completed consent and declaration form at registration. For competitors and/or registered support persons (see NoR 14.1) under 18 years of age these forms shall be signed by the parents or guardians. The forms can be downloaded from the event website.

20 COMPETITORS DRONES

- 20.1 [DP] Competitors or their representatives shall not fly drones over the shore facilities or over the racing area during training or racing days without complying with local legislation and without prior written approval by the organizing authority.
- 20.2 The approval granted at the sole discretion of the organizing authority may impose limitations on where and when drones may fly.
- 20.3 At any time, the risk and responsibility for flying any drone is with the person flying the drone and images made inside the racing area shall be shared with the organizing authority, race committee or international jury at reasonable request.

21 INSURANCE

- 21.1 Each boat at the event shall be insured with a valid third-party liability insurance with a minimum cover of 3,000,000 EUR (or the equivalent) per incident and valid for the event.
- 21.2 The organizing authority is not responsible for verifying the status or validity of the insurance certificates in accordance with NoR 21.1. However, the organizing authority reserves the right to verify the status or validity of insurance certificates to ensure protection for all persons involved in the event.

22 PRIZES

- 22.1 In each rating group/class one prize will be awarded for every four boats entered up to a maximum of three prizes.
- 22.2 Medals will be awarded to the best three overall scored boats in each class by DSV. Certificates will be awarded to the best six overall scored boats in each class by DSV.
- 22.3 The following titles will be awarded to the winners in each class:
International German Champion 2025 ORC Inshore in class ...
International German Champion 2025 ORC Offshore in class...
International German Champion 2025 ORC Double Handed in class...
- 22.4 Additional special prizes and perpetual trophies for the individual events will be published on the event website.
- 22.5 Every boat may pick up a Kiel Week plaque as a souvenir at registration.
- 22.6 Prizes not claimed at the prize giving ceremony will remain with the organizing authority.



Additional Information

NOT PART OF THE NOTICE OF RACE

1 FURTHER INFORMATION

- 1.1 Class or private parties in the harbour during the event require prior permission of the organizing authority. Applications shall be made in time.
- 1.2 Traffic regulations:
During Kiel Week, altered traffic regulations apply in the Olympic Sailing Center area. All participants are urgently requested to observe the traffic signs when approaching Kiel-Schilksee and to cooperate with the police and the organizing authority. Further instructions will be given at the entrance to the harbour area.
- 1.3 The Olympic harbour may be entered by vehicles during the following times:
 - Friday, 21 June, 0800 - 2400 hrs.
 - Wednesday, 26 June, 0600 - 2400 hrs.
 - all other days: 0600 - 2200 hrs.At night the harbour area is closed for all vehicles.
 - 1.3.1 Temporary access to the harbour:
 - 1.3.2 You may temporarily enter the harbour area by paying a deposit of 50 EUR valid for one (1) hour by card or cash. The deposit will be returned at the exit after having left the harbour area on time.
 - 1.3.3 Sufficient parking spots for cars are available near the Olympic Sailing Center. Please follow the road signs to the public parking areas. Parking alongside Fördestraße is forbidden and cars will be towed away.
 - 1.3.4 It is not allowed to leave vehicles or boat trailers in the harbour area or launching ramps for centreboard yachts.
- 1.4 Cranes:
Keelboats arriving by trailer may be launched and hauled out with their own connection wire by the cranes in the Olympic Sailing Center only.
 - 1.4.1 Crane operating hours:
 - Friday, 21 June, 0800 - 2000 hrs.
 - Wednesday, 26 June, 0800 - 2000 hrs.
 - all other days: 0800 - 1800 hrs.
- 1.5 The organizing authority asks to mind that the skippers of ribs – or any other motorboat – need the German ‘Sportbootführerschein See’ or an equivalent powerboat license of the home country (e.g. RYA level 2 powerboat or international certificate of compliance).
- 1.6 The legal speed limit in Strande Bay is 10 knots.
- 1.7 The legal speed limit in the harbour is 3 knots.

2 ILCA CHARTER BOATS

A limited number of charter boats will be available for this event. The charter boats will be supplied on a launching trolley as a hull with self-bailer, padded hiking strap, spars (composite mast top section, appropriate bottom section and a boom), centreboard and rudder in carry bag, mainsheet side cleats, control line deck block fitting with blocks and control line deck cleat fitting with cleats.

For more information and booking please visit the Ziegelmayr [website](#).

3 ACCOMODATION

We would like to kindly ask you to book accommodation yourself.

3.1 Tourist Information Kiel:

Andreas-Gayk-Straße 31, 24103 Kiel, Germany

Phone: +49 431 679 100

Fax: +49 431 67 910 99

E-Mail: info@kiel-sailing-city.de Website: www.kiel-sailing-city.de

3.2 Tourist Information Strande:

Strandstraße 12, 24229 Strande, Germany

Phone: +49 434 92 90

Fax: +49 4349 90 99 74

E-Mail: info@strande.de Website: www.strande.de

4 CAMPING

A camping site for tents and caravans is available north of the Kiel-Schilksee Olympic Sailing Centre. Information about their use and fees will be provided at the [event website \(FAQ\)](#).



www.kieler-woche.de/segeln



Pictures:

Sascha Klahn - www.saschaklahn.com

Christian Beeck - www.segel-bilder.de

Innovative, digitale Drucklösungen



Die bizhub i-Serie von Konica Minolta ermöglicht intelligenteres Arbeiten: Intuitive Bedienung, Sicherheit, mobile Konnektivität, Anwendungsökosystem, Produktivität und Nachhaltigkeit. Die Digitalisierung bringt neue Chancen mit sich und bietet Möglichkeiten, Ihre Kundenorientierung weiter auszubauen. Wir unterstützen Sie dabei, Ihre IT fit für die Zukunft zu machen.



Lassen Sie uns über Ihre
Möglichkeiten sprechen!

Offizieller Druck-Dienstleister der Kieler Woche 2025



Hugo Hamann GmbH & Co. KG · Droysenstraße 21 · 24105 Kiel · T 04 31 51 11-274 · www.buerokompetenz.de/printkompetenz

Addendum Driving Map Kiel-Schilksee-Stein



Addendum Traffic Separation Schemes

World Sailing Appendix TS, Traffic Separation Schemes, Version 3 (Effective January 1, 2024) Section B:

TS2 Rule 56.2 is changed to:

- 56.2**
- (a) A Traffic Separation Scheme (TSS) shall be understood to mean an area shown on a nautical chart, or in the notice of race, as a TSS.
 - (b) A boat shall not enter a TSS and, while near a TSS, shall not impede, or present a threat of impeding, a vessel using a TSS traffic lane.
 - (c) Add to the definition Obstruction: 'A TSS is an *obstruction*.'

Appendix TS Section B applies to the areas shown below:

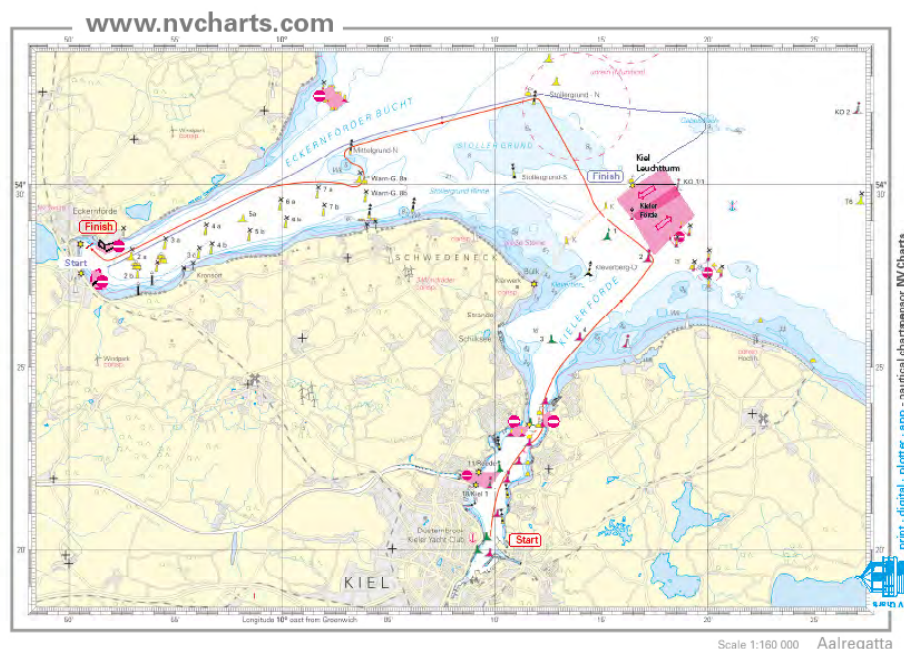
- TSS Kiel Lighthouse and cross-restricted areas**
- Entrance Kiel Canal and cross-restricted areas Kiel Fjord**



- Cross-restricted area near Damp**



- Cross-restricted areas Eckernförde Bay**



We ♥ water



All water sports. One community. 17. – 25.1.2026

