



49er, 49erFX and Nacra17

Junior European Championships

Lake Lipno, Černá v Pošumaví, Czech Republic

6th to 9th June 2024

**The Organising Authority is the Jachetní klub Černá v Pošumaví
in conjunction with the International 49er and Nacra 17 Class
Associations**

NOTICE OF RACE

Updated January 30, 2024 – Update to 3.6

[NP] denotes a rule that shall not be grounds for protests by a boat. This changes RRS 60.1(a).

[DP] denotes a rule for which the penalty is at the discretion of the International Jury.

[SP] denotes a rule for which a standard penalty may be applied by the race committee without a hearing or a discretionary penalty applied by the International Jury with a hearing.

1. RULES

- 1.1 The regatta will be governed by the rules as defined in *The Racing Rules of Sailing*.
- 1.2 Penalties: In RRS 44.1 "Two-Turns Penalty" is changed to "One-Turn Penalty"
- 1.3 Appendix P, *Special Procedures for Rule 42*, shall apply, with RRS P2.1 to P2.4 deleted and replaced by: "When a boat is penalised under RRS P1.2, her penalty shall be a One-Turn Penalty under RRS 44.2. If she fails to take the penalty she shall be disqualified without a hearing."
- 1.4 The Class Rules will apply except for any that are altered by the Notice of Race. The Class Race Management Guidelines, which can be found [here](#), will also apply, but a failure to follow these Guidelines is not on its own grounds for redress. This changes RRS 62.1(a).
- 1.5 The National Authority prescriptions shall apply, See Attachment D.

- 1.6 This is a World Sailing 100-point ranking event.
- 1.7 Appendix T will apply.

2. [DP] ADVERTISING

- 2.1 Boats may be required to display advertising chosen and supplied by the Organising Authority.
- 2.2 For 49er and 49erFX - the bottom two panels of the jib area shall be restricted to Class and Event advertising and all competitors shall place class nominated branding on their jibs according to the World Sailing approved 49er Class jib advertising policy.
For Nacra 17 - the area of the jib, except for the visibility window, shall be restricted to Class and Event advertising and all competitors shall place class nominated branding on their jibs according to the World Sailing approved Nacra 17 Class jib advertising policy.

3. ELIGIBILITY AND ENTRY

- 3.1 Competitors shall comply with the World Sailing Eligibility Code (Regulation 19).
- 3.2 For the 49er and 49erFX gender is open. For the Nacra 17 teams must be of mixed gender.
- 3.3 All competitors shall be fully paid-up members of the International 49er or Nacra 17 Class Associations.
- 3.4 Russian and Belarusian nationals are not permitted to enter the Championship.
- 3.5 Entries should be received by the Organising Authority and will only be accepted after the 1st June, 2024 at the discretion of the Organising Authority and with the payment of the Late Entry Fee.
- 3.6 **Entries will only be accepted from 49er and 49erFX teams where both competitors are under 23 years of age on 31st December 2024, or from Nacra 17 teams where both competitors are under 24 on 31st December 2024.**
- 3.7 Competitors can enter and pay the fee by visiting the online registration portal: <https://1url.cz/@entry>
- 3.8 The Organising Authority reserves the right to cancel an event for any class if the minimum number of 10 entries is not reached.

4. FEES

- 4.1 Entry Fees:

Class	Paid before 1st March 2024	Paid after 1st March 2024
49er	5000 CZK (~200 €)	7000 CZK (~280 €)
49erFX	5000 CZK (~200 €)	7000 CZK (~280 €)
Nacra 17	5000 CZK (~200 €)	7000 CZK (~280 €)

Coach Boat Entry Fee: 2500 CZK (~100 €) per coach boat

- 4.2 Cancellation; in the case of a team withdrawing from the Junior European Championship, the paid entry fee will be refunded as follows:
 - Up to 1st May 2024: 75% of the entry fees will be refunded.
 - After 1st May 2024: No refund will be made.

5. FORMAT OF RACING

5.1 The Championships will consist of an Opening Series. The Opening Series may be divided into a Qualifying Series and a Final Series.

6. SCHEDULE OF EVENTS

- 6.1 Day 0 - Wednesday 5th June 1500 - 1730 Registration/Inspection
1800 Opening Ceremony followed by Competitors Briefing
- Day 1 – Thursday 6th June 1030 Races
- Day 2 - Friday 7th June 1030 Races
- Day 3 – Saturday 8th June 1030 Races
- Day 4 - Sunday 9th June 1030 Races
- 6.2 Prize Giving and Closing Ceremony as soon as possible after the final races. On Sunday 9th June there will be no warning signal after 1530.
- 6.3 Each race day, a daily briefing will be held in the event hall at 0900.

7. MEASUREMENT

- 7.1 All boats shall-may be inspected for class rules compliance prior to racing, according to the Schedule of Events. Additional spot measurement checks may be carried out during the Championship.
- 7.2 For 49er, 49erFX, and Nacra 17 only one set of sails and one forestay shall be used throughout the duration of the Championship.
- 7.3 Equipment shall only be replaced with permission of the Technical Committee.

8. EQUIPMENT INSPECTION

- 8.1 This regatta is an international event for the purpose of RRS G1.1.
- 8.2 A Technical Committee will be appointed in accordance with RRS 92.
- 8.3 RRS G3 applies to supplied equipment.
- 8.4 Boats shall be available for inspection in accordance with Notice of Race
- 8.5 The procedures for inspections will be specified in the ER.
- 8.6 The fact that race officials may conduct inspections of a boat does not reduce the responsibilities of each competitor set out in the rules.

9. EQUIPMENT LIMITATIONS

Equipment limitations shall be enforced for this event.

10. SAILING INSTRUCTIONS

The Sailing Instructions will be available on the Official Notice Board located online at this link: <https://1url.cz/@9ers>

11. VENUE

The 2024 49er, 49erFX and Nacra 17 Junior European Championships will be held at the Jachetní klub Černá v Pošumaví, Černá v Pošumaví 183, 382 23, Czech Republic. (<https://maps.app.goo.gl/s62wSUwMhYRkDRgr9>)

For mailing/shipping contact: [europeans@sailing.cz](mailto: europeans@sailing.cz)

12. THE COURSE

The course will be windward/leeward with a spreader mark at the windward end and a gate at the leeward end of the course.

13. SCORING

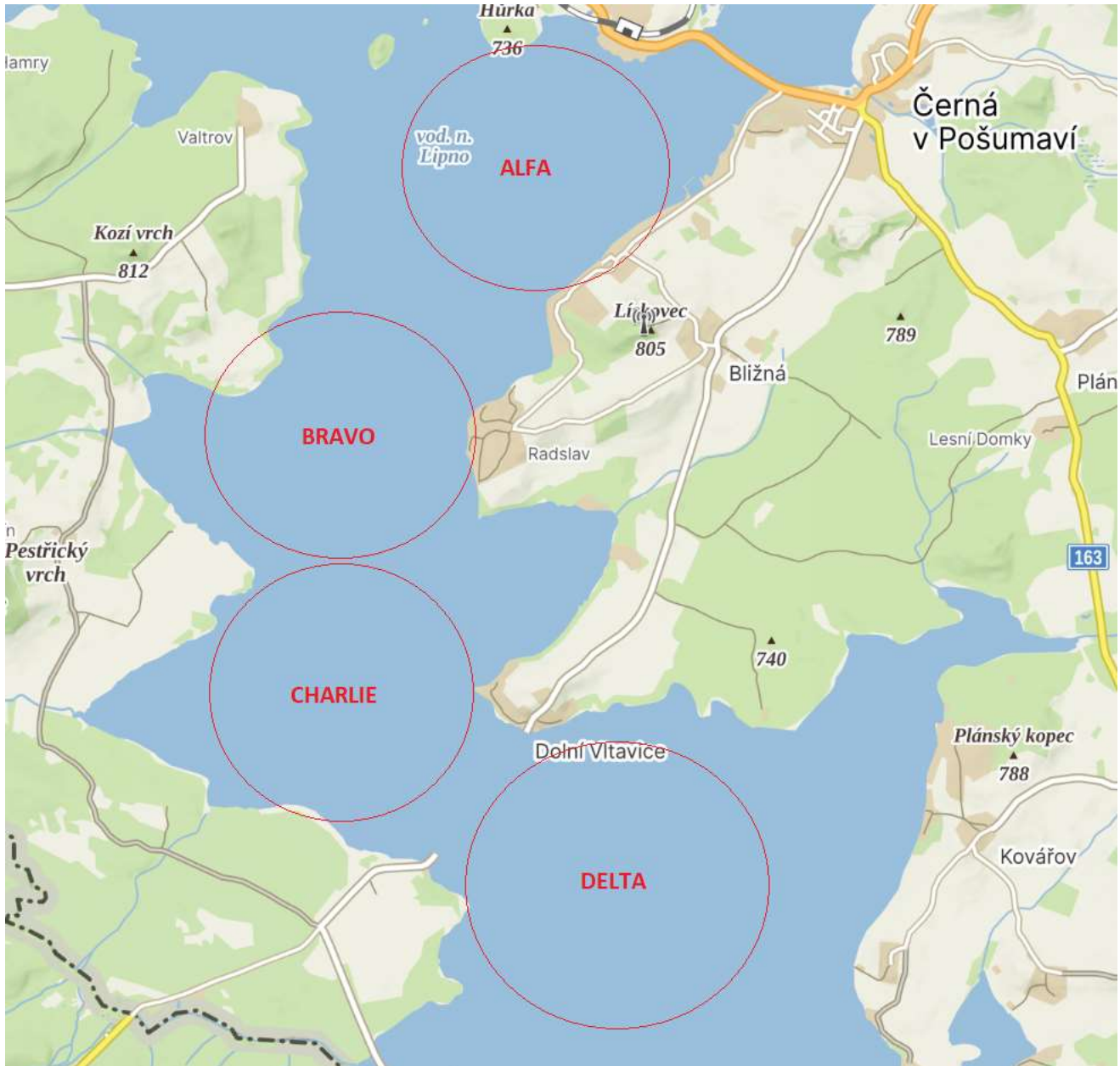
- 13.1 The Low Points Scoring System of RRS Appendix A will apply to the Opening Series
- 13.2 At least 5 races are required to be completed to constitute the Championship.
- 14. SAFETY**
In the event of an emergency the meeting point for safety personnel and the dropping off point for safety boats coming from the racing area will be at the waiting pontoon of Jachetní Klub Černá v Pošumaví. This meeting point will be where an ambulance will be waiting when required. The location of the Emergency Meeting Point is shown in Attachment B.
- 15. SUPPORT VESSELS**
- 15.1 Support vessels shall be registered with the Organising Authority and will be required to comply with local legislation and the Class Support Vessel Regulations which are included in Attachment C. Support persons shall register at <https://1url.cz/@entry> and complete on-site registration at the race office at the venue.
- 15.2 All support vessels shall clearly display the 3-letter national code of their WS Member National Authority at all times while afloat. The minimum height for the letters shall be 200mm.
- 15.3 If called upon support vessels will be required to act as rescue boats.
- 16. INTERNATIONAL JURY**
An International Jury will be appointed in accordance with RRS 91(b). Its decisions will be final as provided in RRS 70.5
- 17. PRIZES**
Prizes for the Championships will be announced and awarded at the end of Racing for the first three places overall and for the Other Fleet(s) respectively.
The winners will receive medals-
- 49er Junior European Championship - 1st, 2nd, 3rd,
 - 49erFX Junior European Championship - 1st, 2nd, 3rd,
 - Nacra 17 Junior European Championship - 1st, 2nd, 3rd,
 - Silver fleet winners (if applicable)
- 18. RADIO COMMUNICATION**
Except in an emergency a boat shall neither make nor receive radio transmissions, text messages or cellular phone calls while racing.
- 19. INSURANCE**
Each participating boat shall have valid third-party liability insurance with a minimum cover of at least 9.000.000 CZK (or equivalent) per incident.
- 20. RISK STATEMENT**
RRS 3 of the Racing Rules of Sailing states: “The responsibility for a boat’s decision to participate in a race or to continue racing is hers alone.”
Sailing is by its nature an unpredictable sport and therefore inherently involves an element of risk. By taking part in the event, each competitor agrees and acknowledges that:
- a) They are aware of the inherent element of risk involved in the sport and accept responsibility for the exposure of themselves, their crew and their boat to such inherent risk whilst taking part in the event;

- b) They are responsible for the safety of themselves, their crew, their boat and their other property whether afloat or ashore;
- c) They accept responsibility for any injury, damage or loss to the extent caused by their own actions or omission;
- d) Their boat is in good order, equipped to sail in the event and they are fit to participate;
- e) The provision of a race management team, patrol boats and other officials and volunteers by the event organiser does not relieve them of their own responsibilities.
- f) The provision of patrol boat cover is limited to such assistance, particularly in extreme weather conditions, as can be practically provided in the circumstances.
- g) It is their responsibility to familiarise themselves with any risks specific to this venue or this event drawn to their attention in any rules and information produced for the event and to attend any competitor briefing held for this event.

21. MEDIA RIGHTS, CAMERAS AND ELECTRONIC EQUIPMENT

- 21.1 Where consent for imagery has been given by a competitor participating in the Championship, competitors grant to the Organising Authority, the International 49er and the Nacra 17 Class Associations and their sponsors, the right in perpetuity to make, use and show, from time to time at their discretion, any motion pictures and live, taped or filmed television and other reproductions of the athlete during the period of competition without compensation.
- 21.2 Boats may be required to carry cameras, sound equipment or positioning equipment as specified by the Organising Authority.
- 21.3 Competitors may be required for interviews and press conferences at the Championship.

ATTACHMENT A - RACING AREA



ATTACHMENT B - EMERGENCY MEETING POINT



The location of the Emergency Meeting Point will be where circle with 11 is designated.

ATTACHMENT C - SUPPORT VESSEL REGULATIONS

Support Vessels shall carry the following Equipment on board,

- Life jackets / buoyance aids for the driver and all passengers,
- Engine kill cord (also known as a safety lanyard or automatic engine immobiliser) with a spare kill cord on the support vessel.
- VHF radio capable of receiving instruction from Safety or Race Committee
- First-aid kit
- Device for making a sound signal.
- Compass
- Adequate anchor and tackle for conditions and depth
- Tow rope (minimum 15m long and 10mm thick)
- Knife

Support Vessel Regulations

- Support Vessels shall be registered with the Organising Authority and shall be marked with their applicable national sail letters clearly displayed, the minimum height for these letters is 200mm.
- Support Vessels shall comply with all local regulations.
- Support Vessels shall follow Race Committee instructions on the designated VHF channel
- **Kill cords shall be worn at all times when the engine is running**
- Life jackets / buoyance aids - it is recommended that they are worn at all times when afloat and **shall** be worn in winds of over 10 knots or when motoring at more than 10 knots.
- Support vessels shall not be positioned, except during rescue operations,
 - Closer than 100 metres of any boat racing
 - Within 100 metres to leeward of the starting line and its extensions from the warning signal until all boats have left the starting area or the race committee signals a postponement, general recall or abandonment.
 - Within 100 metres of any mark of the course while boats are in the vicinity of that mark
 - Within 100 metres of the finishing line while boats are finishing
 - In addition, support vessels that are motoring above 5 knots shall remain at least 150 metres from any boat racing

David Campbell James Email campbelljames@btinternet.com
Updated January 2022

ATTACHMENT D – CZECH NATIONAL PRESCRIPTIONS



CZECH NATIONAL PRESCRIPTIONS

With effect from 1st May 2021, Czech Sailing Association prescribes,

RRS 40:

- a) Add to Rule 40.2: Rule 40.1 applies at all times while afloat for competitors and support persons younger than 18 years old at the day of start of the event.
- b) Change Rule 40.1 by adding to word "competitor" words "and support person".
- c) The support person which is driving the motorboat registered at the event shall use kill cord when motor is running.

RRS Part 6:

- a) Add Preamble to RRS Part 6: The Czech Sailing Association prescribes that the following are requirements to enter an event within its jurisdiction:
 - i. Czech competitors or competitors officially living in the Czech Republic are required to prove valid competitor's license issued by the Czech Sailing Association. Breach of this prescription cannot be subject of protest or request for redress by boat.
 - ii. Czech competitors or competitors officially living in the Czech Republic shall prove with a regular medical examination at any type of the event according to notice of Czech Ministry of Health. This notice is available here: <https://aplikace.mvcr.cz/sbirka-zakonu/ViewFile.aspx?type=z&id=26584>

Add new rule RRS 61.4:

- a) No fees shall be charged for any procedures under Part 5. Rule 64.4(e), however, remains unchanged.

RRS 67:

- a) Each participating boat or sailor shall be insured with valid third-party liability insurance with a minimum cover of CZK 9.000.000 per incident or the equivalent.
- b) Each support boat registered at the event or the support person which is driving this motorboat shall be insured with valid third-party liability insurance with a minimum cover of CZK 9.000.000 per incident or the equivalent.
- c) Any issue of liability or claim for damages arising from an incident while a boat is bound by the *rules* as defined in The Racing Rules of Sailing shall be subject to the jurisdiction of the courts and not considered by a protest committee.
- d) A boat that takes a penalty or retires does not thereby admit liability for damages or that she has broken a rule.

