



## ***49er, 49erFX and Nacra17***

# **World Championships**

**Auckland, New Zealand  
28th November to 8th December 2019**

**The Organising Authority is Yachting New Zealand in conjunction with  
the International 49er and Nacra 17 Class Associations**

## **SAILING INSTRUCTIONS**

[NP] denotes a rule that shall not be grounds for protests by a boat. This changes RRS 60.1(a).  
[DP] denotes a rule for which the penalty is at the discretion of the International Jury.  
[SP] denotes a rule for which a standard penalty may be applied by the race committee without a hearing or a discretionary penalty applied by the International Jury with a hearing

### **1. RULES**

- 1.1 The regatta will be governed by the rules as defined in *The Racing Rules of Sailing*.
- 1.2 RRS Appendix P, *Special Procedures for Rule 42*, will apply
- 1.3 For the Medal Race, World Sailing Addendum Q (as posted on the official notice board) takes precedence over any conflicting instructions.

1.4 The Class Rules will apply except for any that are altered by the Notice of Race or the Sailing Instructions. The Class Race Management Guidelines will also apply.

1.5 The Yachting New Zealand Prescriptions will not apply except for the Prescription that applies to RRS67, which prescribes that:

1.5.1 Findings of fact, and decisions of protest committees, shall be relevant only for the purposes of the World Sailing Racing Rules of Sailing.

1.5.2 Any issue of liability or claim for damages arising from an incident while a boat is bound by The Racing Rules of Sailing shall be subject to the jurisdiction of the courts and not considered by a protest committee.

1.5.3 A boat that retires from a race or accepts a penalty, does not by that action alone admit liability.

1.6 The Yachting New Zealand Safety Regulations shall not apply except for:

1.6.1 Section 11: Boats shall carry their sail number on the port and starboard sides of the hull, in clearly distinctive letters and figures at least 50mm high. The Organising Authority will supply the stickers.

1.6.2 Section 12: Each boat trailer or cradle shall be clearly marked with the class and sail number of the boat using it. Tags will be supplied by the Organisers.

1.7 If there is a conflict between languages the English text will take precedence.

1.8 [DP] Penalties for breaches of RRS 41, the Class Rules or the Equipment Inspection Regulations are at the discretion of the International Jury.

1.9 For 49er and 49erFX - the bottom two panels of the jib area shall be restricted to Class and Event advertising and all competitors shall place class nominated branding on their jibs according to the World Sailing approved 49er Class jib advertising policy.

1.10 For Nacra 17 - the area of the jib, except for the visibility window, shall be restricted to Class and Event advertising and all competitors shall place class nominated branding on their jibs according to the World Sailing approved Nacra 17 Class jib advertising policy

1.11 This is a World Sailing ranking 200 point event

## **2. IDENTIFICATION [DP][NP][SP]**

2.1 Boats (49ers, 49er FX and Nacra 17) will be required to affix the boom stickers provided by the Organising Authority on both sides of the boom. Boats shall affix the stickers in accordance with any instructions given by the Organising Authority.

2.2 [SP] Provided two or more qualifying races have been completed, from Wednesday 4 December, the sailors of the first, second and third boats in series

ranking at the beginning of the day shall wear yellow, blue and red lycra bibs respectively. These bibs will be available at the Race Office each day from two hours before the first scheduled warning signal of the day and shall be returned by competitors as soon as possible after the day's racing.

### 3. CAMERAS AND ELECTRONIC EQUIPMENT [NP]

3.1 Boats may be required to carry on board cameras, sound equipment or positioning equipment as specified by the Organising Authority. Competitors may also use their own camera recording equipment and attachments, but these are to be removable for weighing. A boat shall not be given redress based on a claim involving this equipment. This changes RRS 62.1

3.2 [DP][SP][NP] The Organising Authority may supply GPS tracking units for use during the Qualifying Series, the Final Series and the Medal Races. Boats shall carry these GPS units whilst racing. The GPS units shall be picked up every morning from the Race Office before going afloat and shall be returned to the Race Office no later than the end of protest time.

3.3 No competitor or support team shall use a drone over the racing area.

### 4. NOTICES TO COMPETITORS

4.1 Notices to competitors will be posted on the Official Notice Board.

The official notice board is: <https://49er.org/event/2019-world-championship/#noticeboard>"

Notices will also be posted on the event app.

4.2 The Race Office is located to the northwest of the launching ramps.

### 5. CHANGES TO SAILING INSTRUCTIONS

Any change to the sailing instructions will be posted not less than two hours before the scheduled warning signal on the day it will take effect, except that any change to the schedule of races, will be posted by 2000 the day before it will take effect.

### 6. SIGNALS MADE ASHORE

6.1 Signals made ashore will be displayed at the flagpoles located by the Race Office. When a signal is displayed over a fleet flag, it applies to that fleet only.

6.2 [DP][NP][SP] Flag D displayed ashore with one sound signal means: "the warning signal will be made not less than the time in minutes in the table below after flag D is displayed or not before the scheduled time, whichever is later. Boats shall not leave their allocated berth until this signal is made".

Race areas	Time (minutes)
(A)Musick, (B)Motuihe, (C) Browns Is, (H)Rangitoto, , (J)Mairangi, (K)Rothesay	90
(I)Milford, (D)St Heliers	75
(G)Takapuna, (E)Kohi, M2	60
M1	45

## 7. SCHEDULE OF EVENTS

7.1	Monday 11 November	Venue Opens	
	Thursday 28 November	0900 - 1700	Registration/Nacra Inspection
	Friday 29 November	0900 - 1700	Registration/49er Inspection
		1800	Nacra 17 Open Forum
		1900	Nacra 17 AGM
	Saturday 30 November	0900 - 1700	Registration/Inspection
		1800	49er Open Forum
		1900	49er 17 AGM
	Sunday 1 December	0900 - 1100	Additional Measurement
		1800	Opening Ceremony
	Monday 2 December	1100	Competitor Briefing
	Day 1 - Tuesday 3 December	1100	Qualifying Races
	Day 2 - Wednesday 4 December	1100	Qualifying Races
	Day 3 - Thursday 5 December	1100	Qualifying Races
	Day 4 - Friday 6 December	1100	Fleet Races
	Day 5 - Saturday 7 December	1100	Fleet Races
	Day 6 - Sunday 8 December	1030	Fleet Races & Medal Races
	Prize Giving and Closing Ceremony as soon as possible after the Medal Races		

7.2 On Sunday 8 December there will be no warning signal after 1230 for those taking part in the Final Gold Fleet Races, after 1500 for those taking part in Silver or Bronze Fleet Races and after 1700 for those taking part in Medal Races.

7.3 There will be a meeting with the Field of Play Manager and coaches at 0900 each morning from Tuesday 3 December in the upstairs function room.

7.4 Attachment E - Schedule of Races is published below

## 8. FORMAT OF RACING - QUALIFYING SERIES, FINAL SERIES AND MEDAL RACE

The regatta will consist of an Opening Series and a Medal Race. The Opening Series will be divided into a Qualifying Series and a Final Series. These races are as described in Attachment C.

## 9. CLASS FLAGS

9.1 In the Qualifying Series, for 49er the class flag will be the class insignia on a background of the colour of the appropriate fleet, yellow, blue or red. For 49erFX and Nacra 17 the class flag will be the class insignia on a background of yellow or blue.

9.2 In the Final Series, the class flags will be the 49er class insignia on a background of yellow (gold fleet), blue (silver fleet) and red (bronze fleet), for 49erFX and Nacra 17 the class insignia on a background of yellow (gold fleet) and blue (silver fleet).

9.3 In the Medal Races, the class flags will be the class insignia on a yellow background.

## 10. RACING AREAS

10.1 Attachment B shows the location of the race area.

10.2 The provisional race schedule, including the time of the first warning signals, and assignments of fleets to race areas will be as Attachment E. Any change to racing areas will be posted before flag D is displayed, see SI 6.2.

10.3 An update to Attachment E will be posted daily no later than 2000 on the previous evening of any race affected.

10.4 [DP][NP] Boats not racing shall not sail in the course area being used by another fleet.

## 11. THE COURSES

11.1 Attachment A shows the course to be sailed, the order in which the marks are to be passed, the side on which each mark is to be left, and the signals indicating the number of rounds to be sailed.

11.2 No later than the warning signal, the race committee signal vessel will display the course and the approximate compass bearing of the first leg.

11.3 There will be a gate at the leeward marks and Nacra 17 will have a spreader mark at the windward mark.

11.4 A gate may be replaced by a single mark to be left to port.

## 12. MARKS

Mark	Description	New Mark Description (14.1)
Mark 1	Large Yellow Cylindrical Buoy	Orange Cylindrical Buoy
Mark 1a	Pink Cylindrical Buoy	
Mark 2s and Mark 2p	Yellow Cylindrical Buoys	
Starboard End Start	Race Committee Vessel	
Port End Start	Race Committee Vessel	
Starboard End Finish	Race Committee Vessel	
Port End Finish	Race Committee Vessel	

## 13. THE START

13.1 The starting line will be between staffs displaying orange flags on the starting marks.

13.2 [DP][NP] Boats whose warning signal has not been made shall avoid the starting area.

13.3 A boat starting later than four minutes after her starting signal will be scored Did Not Start. This changes RRS A4 and A5.

13.4 To alert boats that a race or sequence of races will begin soon, the orange starting line flag will be displayed with one sound signal at least TWO minutes before the warning signal is made.

## 14. CHANGE OF THE NEXT LEG OF THE COURSE

14.1 To change the next leg of the course, the race committee will (a) lay a new mark, (b) move the finishing line, or (c) move the leeward gate. When a new mark is laid, the original mark will be removed as soon as possible.

14.2 For Nacra 17 only - if the windward mark is changed a new spreader mark will not be laid.

## 15. THE FINISH

15.1 The finishing line will be between staffs displaying blue flags on the finishing marks.

15.2 [DP][SP] When the blue finishing line flags are displayed no vessels or boats shall enter the Finishing Exclusion Zone other than boats that are finishing. These boats shall immediately leave the zone. See Attachment D

## 16. TIME LIMITS

16.1

Time Limits	Target time	Finish Window	Time Limit
Qualifying and Final Races	30 minutes	15 Minutes	45 minutes
Medal Races	20 minutes	10 minutes	30 minutes

16.2 For Nacra 17 only in winds averaging less than 10 knots the Finish Window is increased to 20 minutes.

16.3 Boats failing to finish within the Finish Window (the time after the first boat sails the course and finishes) will be scored Did Not Finish without a hearing. This changes RRS 35, A4 and A5.

## 17. PENALTY SYSTEM

17.1 Appendix P, Special Procedures for Rule 42 will apply, as changed by SI 17.2

17.2 RRS 44.1 and RSS P2.1 are changed so that the Two-Turns penalty is replaced by a One-Turn penalty.

17.3 Penalties for breaches of NOR 18 (Insurance), NOR 20 (Media Rights), the ER, Class Rules and rules in the Notice of Race and Sailing Instructions marked [DP], are at the discretion of the International Jury.

17.4 Breaches of rules in the SIs marked [NP] will not be grounds for a protest by a boat. This changes RRS 60.1(a).

17.5 For breaches of the SIs marked [SP], the race committee may apply a standard penalty without a hearing. A list of these breaches and the associated standard penalties will be posted on the Official Notice Board. However, the race committee may protest a boat when they consider the standard penalty to be

inappropriate. A boat that has been penalised with a standard penalty can neither be protested for the same incident by another boat nor can another boat request redress for this race committee action. This changes RRS 60.1, 63.1 and Appendix A5.

## **18. PROTESTS AND REQUESTS FOR REDRESS**

18.1 Protest forms are available at the Race Office. Protests and requests for redress or reopening shall be delivered there within the protest time limit.

18.2 The protest time limit will be posted on the Official Notice Board located. The protest time limit will be 120 minutes after the last boat of each fleet has finished the last race of the day or the race committee signals no more racing today, whichever is later. The protest time limit for the Gold Fleet races on Day 6 will be 60 minutes. The same time limits apply to protests by the race committee and jury about incidents they observe in the racing area. This time limit also applies to requests for redress. This changes RRS 61.3 and 62.2.

18.3 Notices will be posted no later than 30 minutes after the protest time limit to inform competitors of hearings in which they are parties or named as witnesses. Hearings will be held in the designated jury rooms. Hearings may start before the scheduled time with the agreement of all parties.

18.4 The Race Committee, Technical Committee or International Jury intending to protest a boat under RRS 60.2, 60.3 or 62.4 will comply with RRS 61.1(b) by informing her by posting a notice on the Official Notice Board before the end of the protest time limit.

18.5 A list of boats that have been penalised under RRS Appendix P on the water or have been disqualified by the jury will be posted on the Official Notice Board.

18.6 For the purposes of RRS 64.3(b) the 'authority responsible' is the Technical Committee appointed by the Organising Authority.

18.7 On the last day of racing of each series, except the Medal Races, a request for reopening a hearing shall be delivered:

- (i) within the protest time limit if the party requesting reopening was informed of the decision on the previous day;
- (ii) no later than 30 minutes after the party requesting reopening was informed of the decision on that day. This changes RRS 66.

18.8 On the last day of racing of each series, except the Medal Race, a request for redress from a jury decision shall be delivered no later than 30 minutes after the decision was posted. This changes RRS 62.2.

18.9 The time limit for requests under RRS N1.4(b) is 5 minutes after a party is informed of a decision.

## **19. INTERNATIONAL JURY**

Decisions of the International Jury will be final as provided in RRS 70.5

## 20. SCORING

- 20.1 The low point scoring system of Appendix A, as changed below, will apply.
- 20.2 FIVE races are required to be completed to constitute the Championship.
- 20.3 When less than FOUR races have been completed, a boat's overall score shall be the sum of her race scores.
- 20.4 When FOUR or more races have been completed, a boat's overall score shall be the total of her race scores excluding her worst score.
- 20.5 When RRS A4.2 and A5 apply, a boat's penalty score shall be based on the number of boats in the largest fleet of their class. This changes RRS A4.2 and A5.
- 20.6 Final Series fleets need not have completed the same number of races.
- 20.7 The Qualifying Series score plus the Final Series score will be the overall points for the Championship except for boats competing in the Medal Race.
- 20.8 The boats in the Gold Fleet will be ranked above the boats in Silver Fleet and so on for the Bronze Fleet if applicable.
- 20.9 The points for each boat carried forward into the Medal Race will be as SI 20.7 after the Final Series.
- 20.10 The boats competing in the Medal Race will be placed 1st to 10th based on their total scores. The remaining boats in the Gold, Silver and Bronze Fleets will then be placed based on their Final Series score.
- 20.11 Medal Race
- 20.11.1 The Medal Race will be for the top 10 overall in the Gold Fleet.
- 20.11.2 For the Medal Race, RRS A4.1 is changed so that the points are doubled. RRS A4.2 is changed so that the scores are based on the number of boats assigned in that race and then doubled.
- 20.4 Resolving Ties
- 20.4.1 In the Qualifying Series ties will be broken in accordance with RRS A8. In the Final Series ties will be broken in accordance with RRS A8 using the Final Series scores.
- 20.4.2 In the Medal Race ties will be broken by the Medal Race score. This changes RRS A8.
- 20.4.3 For tied boats with the same points score in the Medal Race, ties will be broken applying RRS A8 to the Opening Series scores.
- 20.5 Scoring enquiries



To request correction of an alleged error in posted race or series results, a boat shall complete a scoring enquiry form available at the race office. Scoring enquiry forms shall be delivered to the race office. A scoring enquiry may be regarded as a request for redress.

## 21. SAFETY [DP][SP]

21.1 Competitors shall wear a personal flotation device at all times while afloat, except briefly while changing or adjusting clothing or personal equipment.

21.2 [SP] A competitor from each boat will check out by signing a form and collecting their tracker from Tracker Shed next to the race office before going afloat each day. Immediately on returning to shore and at the latest by the end of protest time these competitors will check in by signing the form and returning the tracker.

21.3 Boats not leaving the shore for the day's races shall notify the race office as soon as possible.

21.4 A boat that retires from a race shall notify the race committee as soon as possible.

21.5 When the race committee displays flag V with repetitive sounds, all official and support boats shall monitor the race committee radio channel for that racing area for search and rescue instructions. The race committee will announce 'Flag Victor' using the designated VHF Channel.

21.6 Race Committee radio channels are:

Race Management Team	VHF Radio Channel
Alpha	67
Bravo	72
Charlie	87
Delta	88

21.7 Moving prohibited zone around vessels over 500 gross tonnage (Auckland Harbour Navigation and Safety Bylaws Section 55.

(1) A moving prohibited zone extending to 100 metres astern and 100 metres to each side of a large vessel, and continuing at such width to 500 metres ahead, following the line of the buoyed channel when changing course, is reserved around a large vessel, when that large vessel is underway within the pilotage areas of Auckland (excluding Tāmaki River) and Manukau.

(2) When navigating within a marked channel, the moving prohibited zone to the side of the large vessel is reduced to the width of the marked channel and the zone ahead of the large vessel must follow the line of the marked channel.

(3) The owner or person in charge of a vessel must not navigate the vessel within the moving prohibited zone of a large vessel, within the pilotage area of Auckland (excluding Tāmaki River) and Manukau.

(4) For the purpose of this clause, a tug and barge is considered a composite unit.

## 22. REPLACEMENT OF CREW OR EQUIPMENT

22.1 Replacement of helm or crew shall require written approval of the Field of Play Manager.

22.2 Request for replacement of helm or crew shall be made to the Field of Play Manager at the first reasonable opportunity. On Sunday 8 December any replacement of helm or crew shall be approved no later than the protest time limit of the last relevant gold fleet race for that class.

22.3 Replacement of equipment shall require written approval of the Technical Committee.

22.4 Request for replacement of equipment shall be made to the Technical Committee at the first reasonable opportunity. On Sunday 8 December any replacement equipment shall be approved no later than the protest time limit of the last relevant gold fleet race for that class.

## 23. EQUIPMENT AND MEASUREMENT CHECKS

23.1 All boats will be inspected for class rules compliance prior to racing. Boats shall be presented for measurement checks at the times prescribed in SI 7.

23.2 In addition, any boat or equipment may be checked for compliance with the class rules and sailing instructions at any time. On the water, a boat can be instructed by the Technical Committee to proceed immediately to a designated area for measurement checks.

23.3 Limitations of equipment

- (i) Only one set of sails shall be used during the regatta. The sails shall be presented and stamped during the initial inspection.
- (ii) For 49er and 49erFX only - Only one forestay shall be used during the regatta. The forestay will be tagged during the initial inspection.

23.4 All boats, when not afloat, shall be placed in the official dinghy park.

23.5 All boats shall comply with RRS 78.1 from 1300 on the day before their first scheduled race (hereinafter referred to as "Day Zero") onwards. Non-compliance from 1300 on Day Zero until the start of the first race shall be reported, protested and penalized as if it were discovered after racing on the first day on which races for that boat have been completed. This amends RRS 78.1

## 24. OFFICIAL VESSELS

Vessel	Identification
Signal Vessel Alpha	Yacht with a board with the fleet to be sailed
Signal Vessel Bravo	Yacht with a board with the fleet to be sailed
Signal Vessel Charlie	Yacht with a board with the fleet to be sailed
Signal Vessel Delta	Yacht with a board with the fleet to be sailed
Mark vessels and Start/Finish Pin	No special identification

Safety	Green flag with numbers S1 - S8
Safety Lead	Green flag with Safety
Marshal	Pink flag with black Marshal 1 - 4
Media	White with black Media
Technical Committee	White with TC
Medical	Yellow with red MEDIC 1 - 2
Jury	Yellow Flag with "J"
Gear	White with Gear "A", "B", "C", or "D"

## 25. SUPPORT BOATS [DP][NP]

25.1 Team leaders, coaches and other support personnel shall comply with the 49er, 49erFX, Nacra 17 Auckland World Championship Support Team Regulations.

25.2 The International Jury may direct the Organising Authority to revoke privileges from any boat or person found to be in breach of SI 25.1.

## 26. CODE OF CONDUCT

Competitors and Support persons shall comply with any reasonable request from a regatta official or a member of the Organising Authority. Boats shall follow all instructions given by the OA when returning to shore to avoid overcrowding at the launching ramps.

## 27. TRASH DISPOSAL

As sailors, we seek to protect and restore our oceans and coastal waters. Trash may be placed aboard support and race committee boats.

## 28. RADIO COMMUNICATION [DP][NP]

A boat shall neither make radio transmissions while racing nor receive radio communications not available to all boats. This restriction also applies to mobile telephones.

## 29. PRIZES

Prizes for the Championships will be announced and awarded at the end of the Medal Races for:

- World Championship - 1st to 10th
- Silver fleet - 1st to 3rd
- Bronze fleet - 1st to 3rd (if applicable)
- First Place Under 23 age group

## 30. RISK STATEMENT

RRS 4 of the Racing Rules of Sailing states: "The responsibility for a boat's decision to participate in a race or to continue racing is hers alone."

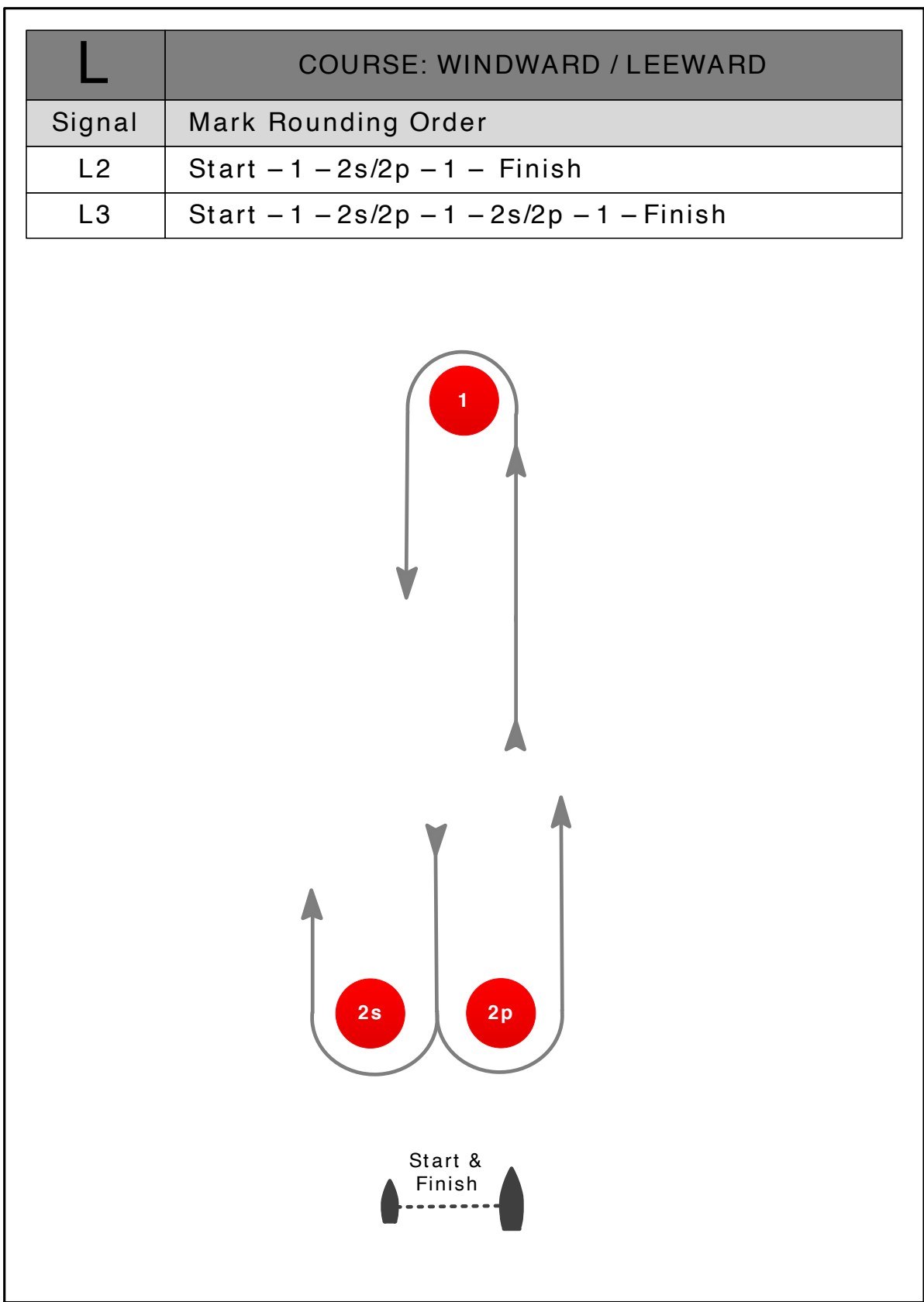
Sailing is by its nature an unpredictable sport and therefore inherently involves an element of risk. By taking part in the event, each competitor agrees and acknowledges that:

- a) They are aware of the inherent element of risk involved in the sport and accept responsibility for the exposure of themselves, their crew and their boat to such inherent risk whilst taking part in the event;
- b) They are responsible for the safety of themselves, their crew, their boat and their other property whether afloat or ashore;
- c) They accept responsibility for any injury, damage or loss to the extent caused by their own actions or omission;
- d) Their boat is in good order, equipped to sail in the event and they are fit to participate;
- e) The provision of a race management team, patrol boats and other officials and volunteers by the event organiser does not relieve them of their own responsibilities;
- f) The provision of patrol boat cover is limited to such assistance, particularly in extreme weather conditions, as can be practically provided in the circumstances.
- g) It is their responsibility to familiarise themselves with any risks specific to this venue or this event drawn to their attention in any rules and information produced for this event and to attend any safety meetings held for this event.

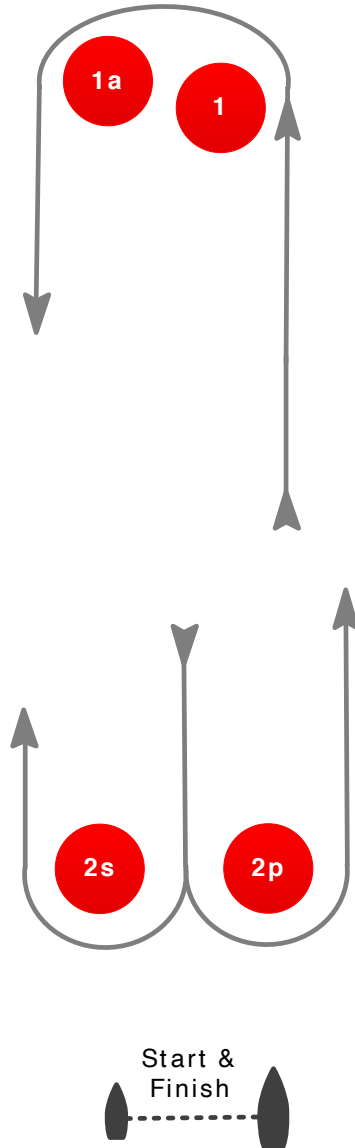
### **31. INSURANCE [DP][NP]**

Each participating boat shall be insured with valid marine third-party liability insurance with a minimum cover of at least NZL\$1,000,000 (or equivalent) per incident.

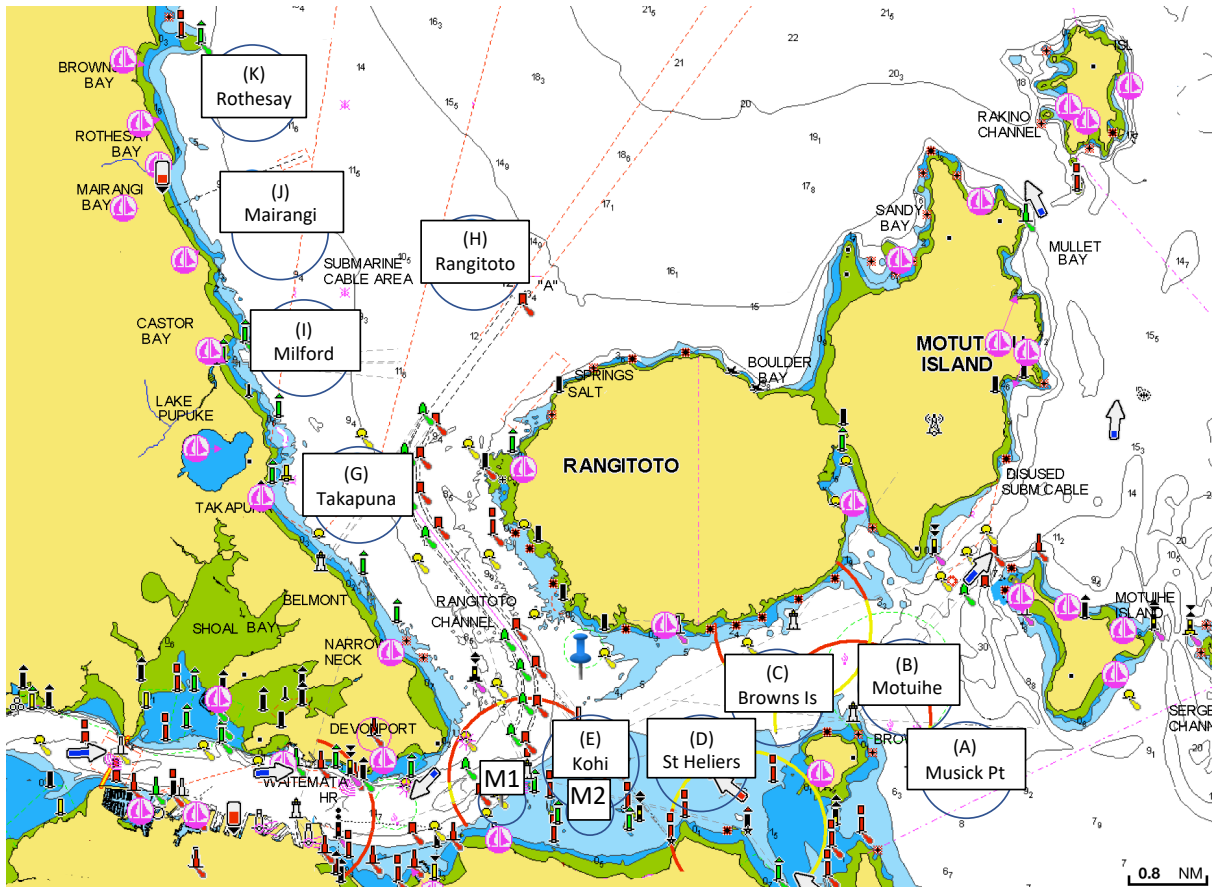
# Attachment A Course Diagrams



LA	COURSE: WINDWARD / LEEWARD with spreader mark and leeward finish
Signal	Mark Rounding Order
LA2	Start – 1 – 1a – 2s/2p – 1 – 1a – Finish
LA3	Start – 1 – 1a – 2s/2p – 1 – 1a – 2s/2p – 1 – 1a – Finish
LA4	Start – 1 – 1a – 2s/2p – 1 – 1a – 2s/2p – 1 – 1a – 2s/2p – 1 – 1a – Finish



## Attachment B Race Area Locations



## Centres of the Race Areas

Race Area	Latitude	Longitude
(A) Musick	S36° 50.000'	E174° 55.340'
(B) Motuihe	S36° 49.150'	E174° 54.610'
(C) Browns Is	S36° 49.160'	E174° 53.000'
(D) St Heliers	S36° 49.900'	E174° 52.050'
(E) Kohi	S36° 49.905'	E174° 50.660'
(G) Takapuna	S36° 47.240'	E174° 47.720'
(H) Rangitoto	S36° 44.925'	E174° 48.970'
(I) Milford	S36° 46.000'	E174° 47.300'
(J) Mairangi	S36° 44.500'	E174° 46.600'
(K) Rothesay	S36° 43.250'	E174° 46.400'
M1	S36° 50.320'	E174° 49.550'
M2	S36° 50.420'	E174° 50.640'
M2	S36° 50.420'	E174° 50.640'

# Attachment C Format of Racing

The Championship will be in three series:

1. Qualifying Series
2. Final Series
3. Medal Race

## 1. Qualifying Series (Days 1, 2 and 3)

1.1 The boats will be split into THREE fleets for 49er and TWO fleets for 49erFX and Nacra 17 of approximately equal numbers of boats. The Qualifying Series will consist of a maximum of TEN races for 49er and NINE races for 49erFX and Nacra 17. However, for each class, if less than SIX races have been completed by all fleets by the end of Day 3, the Qualifying Series will continue.

1.2 The Organising Authority will make initial fleet assignments on the basis of the top 50 ranked boats from the World Sailing rankings, with the remainder being taken in numerical order of sail numbers. The ranking will remain in force until the end of the day during which the 2nd Qualifying Race is completed by all fleets.

1.3 Boats will be reassigned to fleets after each day of racing as long as the 2nd Qualifying Races have been completed by all fleets.

1.4 If all fleets have completed the same number of races, boats will be reassigned to fleets on the basis of their Qualifying Series scores as detailed below. If all fleets have not completed the same number of races by the end of a day, the fleets with fewer races will continue racing the following day until all fleets have completed the same number of races. However, the reassignments will be calculated for those races, numbered in order of completion, completed by all fleets. Reassignments will be made as follows:

FOR 49er

Place in Qualifying Series score Fleet assignment

First	Yellow
Second	Blue
Third	Red
Fourth	Red
Fifth	Blue
Sixth	Yellow
And so on	

For 49erFX and Nacra 17

Place in Qualifying Series score Fleet assignment

First	Yellow
Second	Blue
Third	Blue
Fourth	Yellow
And so on	

Fleet assignments will be based on the ranking available at 2000 that day regardless of protests or requests for redress not yet decided. However at the end of the Qualifying Series, the fleet assignments will be made no later than 0700 on the day they take effect.



## 2. Final Series (Days 4, 5, and 6)

2.1 For 49er and 49erFX the top 25 boats and for Nacra 17 the top 50% of boats sailing in the Qualifying Series based on their Qualifying Series scores after Day 3 will race in the Gold fleet (unless the Qualifying Series has been extended under section 1.1 above).

2.2 The remaining boats will race in the Silver fleet or if appropriate Silver and Bronze fleets of approximately equal numbers depending on the number of boats.

2.3 Any recalculation of Final Series ranking after boats have been assigned to Gold fleets will not affect the assignments except that a redress decision may promote a boat to a higher fleet.

2.4 Three Final Series races are scheduled per day for each fleet on Days 4 and 5.

2.5 On Sunday 8 December (Day 6) two fleet races are scheduled for all fleets.

2.5.1 No warning signal will be made for a gold fleet after 1230.

2.5.2 No warning signal will be made for a silver or bronze after 1500.

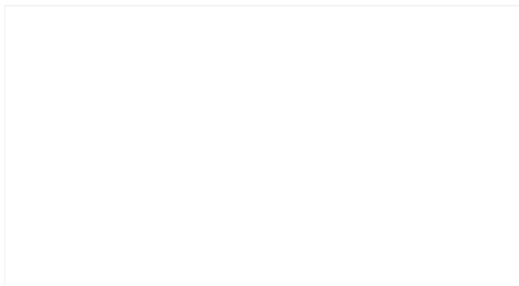
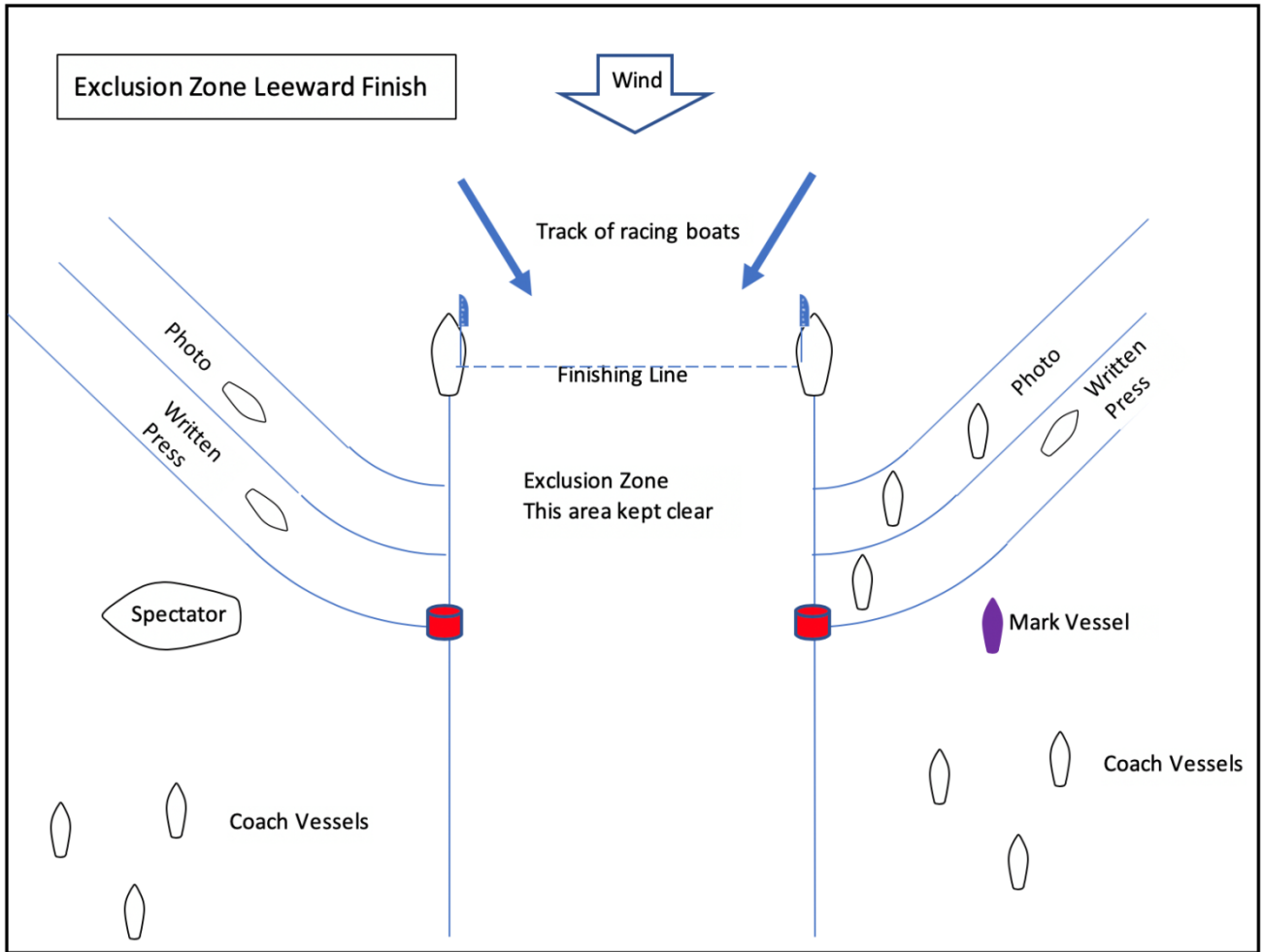
2.6 No warning signal for the Medal Races will be made after 1700 on Sunday 8 December.

2.7 The Medal Race will be for the top 10 boats overall in the Gold Fleet with a target time of 20 minutes. This race will be double low points scoring and shall not be excluded from a boat's series score.

2.8 The points for each boat carried forward into the Medal Race will be as SI 20.2.4 after the Final Series.

2.9 [DP] Medal Race boats shall be made available for equipment inspection no later than 60 mins before the Medal Race warning signal. A quarantine area may be set aside for the competing Medal Race boats. Boats shall comply with any instructions of the Technical Committee concerning inspection or quarantine.

# Attachment D Exclusion Zone Leeward Finish



**Attachment E – Schedule of Races. (A decision about the race areas will be made by 2000 the day before the days racing)**

Fleet	Day 1 - Tuesday 3 December 2019		Day 2 - Wednesday 4 December 2019		Day 3 - Thursday 5 December 2019	
49er Yellow	Takapuna/Kohi 1100 3 races			Takapuna/Kohi 1400 4 races	Takapuna/Kohi 1100 3 races	
49er Blue	Milford/St Heliers 1100 3 races			Milford/St Heliers 1400 4 races	Milford/St Heliers 1100 3 races	
49er Red	Mairangi/ Browns Is 1100 3 races			Rangitoto/Motuihe 1400 4 races	Rangitoto/Motuihe 1100 3 races	
FX Yellow		Mairangi/ Browns Is 1400 3 races	Takapuna/Kohi 1100 3 races			Rangitoto/Motuihe 1400 3 races
FX Blue		Rangitoto/Motuihe 1400 3 races	Milford/St Heliers 1100 3 races			Mairangi/ Browns Is 1400 3 races
Nacra Yellow		Takapuna/Kohi 1400 3 races	Rangitoto/Motuihe 1100 3 races			Takapuna/Kohi 1400 3 races
Nacra Blue		Milford/St Heliers 1400 3 races	Mairangi/ Browns Is 1100 3 races			Milford/St Heliers 1400 3 races

Fleet	Day 4 - Friday 6 December 2019		Day 5 - Saturday 7 December 2019		Day 6 - Sunday 8 December 2019	
49er Gold		Takapuna/Kohi 1400 3 races	Takapuna/Kohi 1100 3 races		Takapuna/Kohi 1030 2 races	M1 1400 1400 1 race
49er Silver		Rangitoto/Motuihe 1400 3 races	Mairangi/ Browns Is 1100 3 races			Mairangi/ Browns Is 1300 2 races
49er Bronze		Milford/St Heliers 1400 3 races	Milford/St Heliers 1100 3 races			Milford/St Heliers 1300 2 races
FX Gold	Takapuna/Kohi 1100 3 races			Takapuna/Kohi 1400 3 races	Milford/St Heliers 1030 2 races	M1 1445 1445 1 Race
FX Silver	Rangitoto/Motuihe 1100 3 races			Rangitoto/Motuihe 1400 3 races		Rangitoto/Motuihe 1300 2 races
Nacra Gold	Milford/St Heliers 1100 3 races			Milford/St Heliers 1400 3 races	Mairangi/ Browns Is 1030 2 races	M1 1530 1530 1 Race
Nacra Silver	Mairangi/ Browns Is 1100 3 races			Mairangi/ Browns Is 1400. 3 races	Rangitoto/Motuihe 1030 2 races	