



2016 Junior World Championships 49er & 49erFX SAILING INSTRUCTIONS

***Organising Authority: the Royal Netherlands Watersports Association (RNWA),
the Dutch 9er Class Association and Sportivents***

[DP] denotes a rule for which the penalty is at the discretion of the International Jury.

[NP] denotes that a breach of this rule will not be grounds for a protest by a boat.

[SP] denotes a rule for which a standard penalty may be applied by the race committee without a hearing"

1. RULES

- 1.1 The regatta will be governed by the rules as defined in 'The Racing Rules of Sailing' (RRS).
- 1.2 No National Authority prescriptions apply.
- 1.3 Decisions of the International Jury will be final as provided in RRS 70.5.
- 1.4 If there is a conflict between languages the English text will take precedence.
- 1.5 Appendix P, Special Procedures for Rule 42, will apply.
- 1.6 RRS 44.1 and RRS P2.1 are changed so that the Two-Turns Penalty is replaced by the One-Turn Penalty.
- 1.7 For the Medal Series, World Sailing Addendum Q, *Umpired Fleet Racing*, will apply and take precedence over any conflicting instructions.

2. [DP] [NP] SAFETY REGULATIONS

- 2.1 The race committee will protest a boat for a breach of these safety regulations.
- 2.2 [SP] Boats not leaving the harbour for a scheduled race shall promptly notify the Race Office.
- 2.3 [SP] A boat that retires from racing shall notify the race committee before leaving the racing area, or if that is not possible, shall notify the race office as soon as possible after returning ashore.

- 2.4 [SP] Boats shall not sail into other course areas whilst the other course areas are racing. Boats not racing shall remain clear of boats that are racing and official boats.
- 2.5 When the race committee displays flag V with repetitive sounds, all support boats shall monitor VHF channel 88 for search and rescue instructions.
- 2.6 [SP] Each boat shall check out each day before leaving the harbour and shall check in before parking their boat in the designated area. See also the separate instruction on the notice board.

3. [DP] CODE OF CONDUCT

Competitors shall comply with any reasonable request from a regatta official.

4. COMMUNICATIONS WITH COMPETITORS

- 4.1 Notices to competitors will be posted on the official notice board(s) located near the race office. Notices will also be posted on the website at www.49erjuniorworlds2016.org. Failure to post a notice at the website will not be grounds for redress. This changes RRS 62
- 4.2 When a visual signal is displayed over an area, event or fleet flag, the signal applies only to that area, event or fleet. This changes the Race Signals preamble.
- 4.3 Signals ashore will be displayed on a flagpole near the race office.
- 4.4 [SP][DP][NP] Flag D displayed ashore with one sound signal means :“the warning signal will be made not less than 30 minutes after flag D is displayed or not before the scheduled time, whichever is later. Boats shall not leave their allocated berth until this signal is made.”

5. CHANGES TO SAILING INSTRUCTIONS

- 5.1 Any change to the format or schedule of races will be posted by 2100 on the day before it will take effect and any change to the Sailing Instructions will be posted before 0800 on the day it will take effect.
- 5.2 Any reassignment of events or fleets to course areas will be posted before 0900 on the day it will take effect, or if flag AP is displayed ashore, 30 minutes before flag AP for that class or fleet is removed.

6. FORMAT OF RACING

- 6.1 The format consists of an Opening Series and a Medal Series.

6.2 Medal Series

6.2.1 A medal series will be scheduled for each junior class with 3 or more Opening Series races completed.

6.2.2 For events with a Medal Race the top 15 boats compete in the Medal Series.

6.2.3 Assignments to the Medal Series will be based on the ranking available at 0800 on the day of the Medal Race. The protest committee may extend the time limit.

6.2.4 The Medal Series consists of two rounds of 3 medal races.

6.2.5 All teams get a total of points on the start of the Medal Series, based on their total ranking in the opening series.

6.2.6 Place 8 to 15 sail the Semi Final Round. In the Semi Final Round teams sail 3 races, top team of this round goes to the Big Final. Place 1 to 7 and the winner of the Semi Final Round sail the Big Final, teams will sail 3 races. Team with the lowest points after these Big Final wins the 2016 Junior World Championship.

7. SCHEDULE OF RACES

- 7.1 The total number of races scheduled in the opening series is 10 races. With 2 extra races on Saturday for those who are not in the Medal Series.
- 7.2 The daily race schedule and the scheduled time of the warning signal for the first race are shown in SI Addendum C.
- 7.3 The Opening Series and Medal Series, if any, will take place as detailed in SI Addendum C. For boats not qualified for the Medal Race, the Opening Series will be extended with two more races on Saturday September 3.
- 7.4 The warning signal for each succeeding race will be made as soon as practicable.
- 7.5 To alert boats that a race or sequence of races will begin soon, the orange starting line flag will be displayed with one sound for at least two minutes before a warning signal is made. Except from the Medal Series, then the orange starting line flag will be displayed with one sound for at least one minute before warning signal.
- 7.6 On Saturday 3 September there will be no warning signal after 1600 for those taking part in the Fleet Races and after 1700 for those taking part in the Final or Medal Races.

8. COURSE AREAS

- 8.1 The course areas are shown in SI Addendum A.
- 8.2 Events are assigned to course areas as stated in SI Addendum C.
- 8.3 For the Medal Race, one race area will be used.

9. THE COURSES

The course will be a windward/leeward with a gate at the leeward end of the course.

10. MARKS

- 10.1 Marks 1, 2S and 2P will be as follows:

Course Area	Marks
Black	Black Cylindrical
Orange	Orange Cylindrical
Medal Races	Black Cylindrical

- 10.2 The starting and finishing line marks will be race committee vessels or spar buoys.
- 10.3 Boundary marks during Medal Races will be blue cylindrical tubes.

11. CLASS FLAGS

Class flags will be class insignia on the following background:

Class Insignia	Background Colour
49er	White
49erFX	Light blue

12. THE START

- 12.1 The starting line will be between a staff displaying an orange flag on the race committee vessel at the starboard end and a staff displaying an orange flag on the race committee vessel at the port end.
- 12.2 [DP] A buoy may be attached to the race committee starting boat anchor line just below keel depth. Boats shall not pass between this buoy and the race committee starting boat at any time. This buoy is part of the race committee starting boat ground tackle.
- 12.3 [DP] When a starting sequence is in progress, boats whose warning signal has not been made shall avoid the starting area. The starting area is defined as a rectangle 50 meters from the starting line and marks in all directions.
- 12.4 When Flag U is displayed as the preparatory signal, no part of a boat's hull, crew or equipment shall be in the triangle formed by the ends of the starting line and the first mark during the last minute before her starting signal. If a boat breaks this rule and is identified, she shall be disqualified without a hearing but not if the race is restarted or re-sailed or postponed or abandoned before the starting signal. This changes RRS 26, 63.1 and A5. RRS 29.1 Individual recall does not apply. The scoring abbreviation for a flag U penalty is UFD. This changes A11 Scoring Abbreviations.
- 12.5 During Medal Series a shortened start sequence (3 minutes) will be used.

13. COURSE CHANGES

- 13.1 To change the next leg of the course, the race committee will move the original Mark, Gate or Finishing Line to a new position.
- 13.2 Courses will not be shortened. This changes RRS 32.

14. THE FINISH

The finishing line will be between a staff displaying an orange flag on the race committee vessel and either:

- (a) a nearby spar buoy with an orange flag., or
- (b) a staff displaying an orange flag on the nearby race committee vessel.

15. TIME LIMITS AND TARGET TIMES

15.1 Except for Medal races, time limits and target times are as follows:

Class	Time Limit	Mark 1 Time Limit	Finish Window	Target Time
49er, 49erFX	50	20	10	35

15.2 Time limits and target times for Medal races are as follows:

Class	Time Limit	Mark 1 Time Limit	Finish Window	Target Time
49er, 49erFX	25	none	5	8

15.3 If no boat has passed Mark 1 within the Mark 1 Time Limit the race shall be abandoned.

15.4 Boats failing to finish within the time stated in the Finish Window after the first boat sails the course and finishes will be scored Did Not Finish. This changes RRS 35, A4 and A5.

16. [DP] EQUIPMENT AND MEASUREMENT CHECKS

16.1 Equipment may be inspected at any time for compliance with the Class Rules and Sailing Instructions. When instructed by an Event Equipment Inspector, a boat shall proceed immediately to a designated area for inspection.

16.2 Boats shall apply Equipment Limitation Control stickers to specified equipment and sign a declaration of compliance prior to racing.

17. [DP] REPLACEMENT OF CREW OR EQUIPMENT

17.1 Substitution of competitors will not be allowed without prior written approval of the race committee and shall comply with any restrictions in the Notice of Race.

17.2 Substitution of damaged or lost equipment will not be allowed unless approved by the race committee. Requests for substitution shall be made to the race committee at the first reasonable opportunity.

18. OFFICIAL BOATS

18.1 Official boats will be marked as follows:

Equipment Inspection	Flags with 'Measurer'
First aid/Medical	Flag with 'R'
Jury/Judges	Flags with 'Jury'
Media	Flags with 'PRESS'
Race Committee	Flags with RC
Rescue or Course Marshalls	Flag with 'R'

18.2 Actions by official boats, helicopters, drones or zeppelin shall not be grounds for requesting redress by a boat. This changes RRS 60.1(b).

19. [DP] SUPPORT BOATS

19.1 Team leader, coaches and other support personnel shall stay outside areas where boats are racing from the time of the preparatory signal until all boats have finished or retired or the race committee signals a postponement, general recall or abandonment. This rule is not applicable when assisting a boat in distress and in case flag V is displayed on any committee boat.

19.2 Support boats shall be marked with their national letters on outboard covers or a flag. Minimum height for letter is 210mm. Minimum flag height above the water is one (1) meter.

19.3 Team leaders, coaches and other support personnel are encouraged to carry a working VHF radio.

19.4 Additional restricted coach boat areas for medal races will be published on the notice board.

20. [DP] [NP] IDENTIFICATION WHILE RACING

20.1 [SP] Each day, the first, second and third boats in series ranking at the beginning of the day require a coloured dot to be applied to the mainsail. The Organising Authority will supply coloured dots. The coloured dots, shall be clearly displayed at the top half of the main sail.

20.2 [SP] Each day, the first, second and third boats in series ranking at the beginning of the day require a coloured bib, that they have to wear while racing. The Organising Authority will supply the bibs.

21. SCORING

21.1 The Low Point System shall apply to all races.

21.2 A boat's score shall be calculated in accordance with RRS A2, except that no score will be excluded. The Medal Series score shall not be excluded.

21.3 In the Medal Series the teams start their round in the Medal Series with a point total according to their overall ranking in the opening series. Like:

Semi-final round	
Result in openings series	Point at start of the round
Rank 8	1 point
Rank 9	2 points
Rank 10	3 points
Rank 11	4 points
Rank 12	5 points
Rank 13	6 points
Rank 14	7 points
Rank 15	8 points

Final round	
Result in openings series	Point at start of the round
Rank 1	1 point
Rank 2	2 points
Rank 3	3 points
Rank 4	4 points
Rank 5	5 points
Rank 6	6 points
Rank 7	7 points
Winner Semi-final round	8 points

- 21.4 A boat starting later than 4 minutes after her starting signal will be scored Did Not Start. This changes RRS A4 and A5.
- 21.5 RRS A4.2 is changed so that those scores are based on,
- (a) the number of boats assigned to a fleet in the Medal Series round
 - (b) the number of boats of the Fleet not assigned to the Medal Series and scheduled to an additional race on the last day
- For those competitors not assigned to the Medal series and scheduled to additional races on the last day, the first finisher will score 1 point, 2nd 2 points and so on.
- 21.6 One race is required to be completed to constitute a regatta.
- 21.7 The boats competing in the Medal Series shall be scored highest in the regatta. This may not apply to a boat disqualified under RRS 5 or 69.
- 21.8 RRS A8 is changed as follows;
- 21.8.1 for boats competing in the Medal Series, ties in the regatta score are broken by their Opening Series Ranking.
 - 21.8.2 Opening Series ties are broken in accordance with A8.
- 21.9 A boat assigned to compete in the Medal Series shall make a genuine effort to start, sail the course and finish. The penalty for a breach of this instruction will be ranking the boat in 15th in the regatta. If there are two such boats, they will be ranked 14th and 15th, in order of their Opening Series ranks and so on. This changes RRS A2.
- 21.10 To request correction of an alleged error in posted race or series results, a boat may complete a scoring enquiry form available from the race office.

22. PROTESTS, PENALTIES AND REQUESTS FOR REDRESS

- 22.1 Protest forms are available at the race office. Protests and requests for redress or reopening shall be delivered there within the appropriate time limit.
- 22.2 For each fleet, the protest time limit is 60 minutes after the last boat has finished the last race of the day.
- 22.3 Notices will be posted within 30 minutes of the protest time limit to inform competitors of hearings in which they are parties or named as witnesses. Hearings will be held in the protest room, located at the International Sailing Centre beginning at the time posted. Hearings may be scheduled to begin up to 30 minutes before the end of protest time.
- 22.4 Notices of protests by the race committee or protest committee will be posted to inform boats under RRS 61.1(b).
- 22.5 A list of boats that have been penalized under Appendix P for breaking RRS 42 will be posted.
- 22.6 Penalties for breaches of RRS 55 (Trash Disposal), NoR 19 (Media Rights), class rules and rules in the Notice of Race and Sailing Instructions marked [DP], are at the discretion of the protest committee. A boat may accept a discretionary penalty before a hearing concerning the same incident by completing a form available at the jury office.
- 22.7 Rules in the SIs marked [NP] will not be grounds for a protest by a boat. This changes RRS 60.1(a).

- 22.8 For breaches of SIs marked [SP], the race committee may apply a standard penalty without a hearing. A list of these breaches and the associated standard penalties will be posted on the Official Notice Board. However, the race committee may protest a boat when they consider the standard penalty to be inappropriate. A boat that has been penalised with a standard penalty can neither be protested for the same incident by another boat nor can another boat request redress for this race committee action. This changes RRS 60.1, 63.1 and Appendix A5.
- 22.9 On the last day of the Opening Series, or on the last scheduled day of racing, a request for reopening a hearing shall be delivered
- (a) within the protest time limit if the requesting party was informed of the decision on the previous day;
 - (b) no later than 30 minutes after the requesting party was informed of the decision on that day.
- This changes RRS 66.
- 22.10 On the last day of the Opening Series, or on the last scheduled day of racing, a request for redress based on a jury decision shall be delivered no later than 30 minutes after the decision was posted. This changes RRS 62.2.

23. [DP] RADIO COMMUNICATION

A boat shall neither make radio transmissions while racing nor receive radio communications not available to all boats, except in an emergency or when using equipment provided by the race committee. This restriction also applies to mobile telephones.

24. [SP][DP] TRASH DISPOSAL

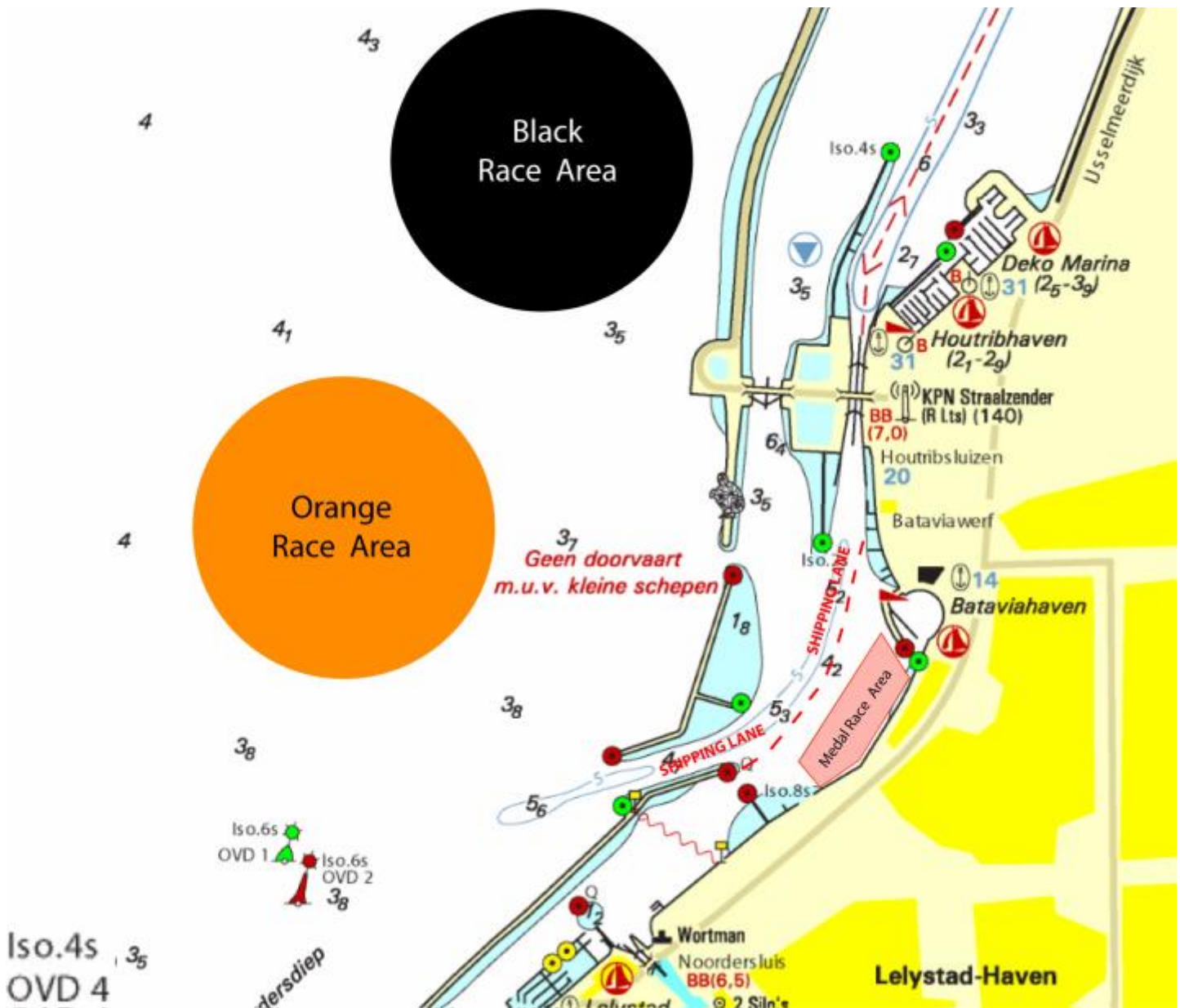
As sailors, we seek to protect and restore our oceans and coastal waters. See RRS 55. Trash may be placed aboard support and race committee boats.

25. PRIZES

Medals will be awarded to the top 3 boats in each event.

49er JWC

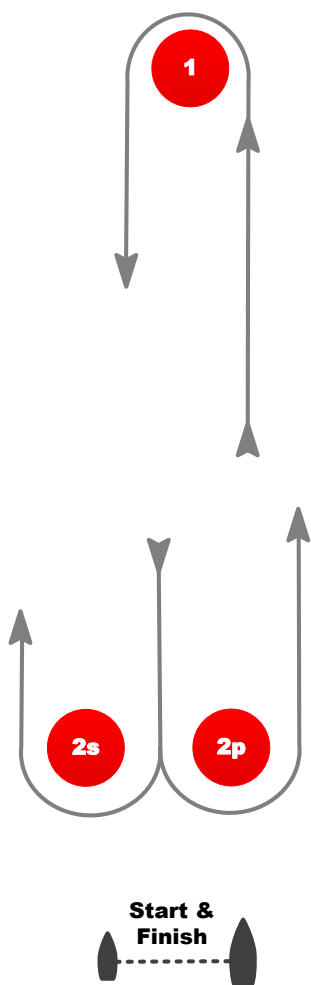
ADDENDUM A - COURSE AREAS



49er JWC

ADDENDUM B - COURSE ILLUSTRATIONS

L	COURSE: WINDWARD / LEEWARD
Signal	Mark Rounding Order
L2	Start - 1 - 2s/2p - 1 - Finish
L3	Start - 1 - 2s/2p - 1 - 2s/2p - 1 - Finish
L4	Start - 1 - 2s/2p - 1 - 2s/2p - 1 - 2s/2p - 1 - Finish



ADDENDUM C - SCHEDULE OF RACES

Course Area	Orange Course Area Race officer: Charli Hadden			Orange Course Race officer: Marcol de Klerk			
Wednesday	10.30	49er	Race 1				
	asap	49er	Race 2				
	asap	49er	Race 3				
	13.30	49erFX	Race 1				
	asap	49erFX	Race 2				
	asap	49erFX	Race 3				
	asap	49erFX	Race 4				
Thursday	10.30	49erFX	Race 5				
	asap	49erFX	Race 6				
	asap	49erFX	Race 7				
	13.30	49er	Race 4				
	asap	49er	Race 5				
	asap	49er	Race 6				
	asap	49er	Race 7				
Friday	10.30	49er	Race 8				
	asap	49er	Race 9				
	asap	49er	Race 10				
	13.30	49erFX	Race 8				
	asap	49erFX	Race 9				
	asap	49erFX	Race 10				
	MEDAL RACES (MEDAL RACE AREA)						
Saturday	11.00	49erFX	PF	R1	10.30	49erFX	Race 11
	asap	49erFX	PF	R2	asap	49erFX	Race 12
	asap	49erFX	PF	R3			
	asap	49er	PF	R1			
	asap	49er	PF	R2	13.00	49er	Race 11
	asap	49er	PF	R3	asap	49er	Race 12
	asap	49erFX	BF	R1			
	asap	49erFX	BF	R2			
	asap	49erFX	BF	R3			
	asap	49er	BF	R1			
	asap	49er	BF	R2			
	asap	49er	BF	R3			

49er

JWC

ADDENDUM Q - UMPIRED FLEET RACES

This addendum has been approved by ISAF in accordance with rule 86.2 and ISAF Regulation 28.1.3.

Version: January 21, 2013

Marginal marks indicate important changes from the previous version.

These sailing instructions change the definition Proper Course, and rules 20, 28.2, 44, 60, 61, 62, 63, 64.1, 65, 66, 70, 78.3 and B5.

Q1 CHANGES TO RACING RULES

Additional changes to rules are made in instructions Q2, Q3, Q4, and Q5.

Q1.1 Changes to the Definitions and the Rules of Part 2 and Part 4

- (a) Add to the definition Proper Course: 'A boat taking a penalty or manoeuvring to take a penalty is not sailing a *proper course*.'
- (b) When rule 20 applies, the following arm signals are required in addition to the hails:
 - (1) for 'Room to tack', repeatedly and clearly pointing to windward; and
 - (2) for 'You tack', repeatedly and clearly pointing at the other boat and waving the arm to windward.

Instruction Q1.1(b) does not apply to boards.

Q1.2 Changes to Rules Involving Protests, Requests for Redress, Penalties and Exoneration

- (a) The first sentence of rule 44.1 is replaced with: 'A boat may take a One-Turn Penalty when she may have broken a rule of Part 2 (except rule 14 when she has caused damage or injury) or rule 31 or 42 while *racing*.'
- (b) For boards, the One-Turn Penalty is one 360° turn with no requirement for a tack or a gybe.
- (c) Rule 60.1 is replaced with 'A boat may protest another boat or request redress provided she complies with instructions Q2.1 and Q2.4.'
- (d) The third sentence of rule 61.1(a) and all of rule 61.1(a)(2) are deleted. Rule B5 is deleted.
- (e) Rules 62.1(a), (b) and (d) are deleted. In a race where this addendum applies, there shall be no scoring adjustments for redress given under any of these rules for a previous race.
- (f) Rule 64.1(a) is changed so that the provision for exonerating a boat may be applied by the umpires without a hearing, and it takes precedence over any conflicting instruction of this addendum.
- (g) Rules P1 to P4 shall not apply.

Q2 PROTESTS AND REQUESTS FOR REDRESS BY BOATS

Q2.1 While racing, a boat may protest another boat under a rule of Part 2 (except rule 14) or under rule 31 or 42; however, a boat may only protest under a rule of Part 2 for an incident in which she was involved. To do so she shall hail 'Protest' and conspicuously display a red flag at the first reasonable opportunity for each. She shall remove the flag before, or at the first reasonable opportunity after a

boat involved in the incident has taken a penalty voluntarily or after an umpire's decision. However, a board need not display a red flag.

Q2.2 A boat that protests as provided in instruction Q2.1 is not entitled to a hearing. Instead, a boat involved in the incident may acknowledge breaking a rule by taking a One-Turn Penalty as described in rule 44.2. If the protested boat does not take a penalty voluntarily, an umpire will decide whether to penalize any boat and signal the decision as provided in instruction Q3.1.

Q2.3 At the finishing line, the race committee will inform the competitors about each boat's finishing place or scoring abbreviation. After this has been done for all boats, the race committee will promptly display flag B with one sound. Two minutes later flag B will be removed with one sound.

Q2.4 A boat intending to

- (a) protest another boat under a rule other than instruction Q3.2 or Q4.2(a), or a rule listed in instruction Q2.1,
- (b) protest another boat under rule 14 if there was contact that caused damage or injury, or
- (c) request redress

shall hail the race committee before or during the display of flag B. The same time limit applies to protests under instructions Q5.4 and Q5.5. The protest committee may extend the time limit if there is good reason to do so.

Q2.5 The race committee will promptly inform the protest committee about any protests or requests for redress made under instruction Q2.4.

Q3 UMPIRE SIGNALS AND IMPOSED PENALTIES

Q3.1 An umpire will signal a decision as follows:

- (a) A green and white flag with one long sound means 'No penalty.'
- (b) A red flag with one long sound means 'A penalty is imposed or remains outstanding.' The umpire will hail or signal to identify each such boat.
- (c) A black flag with one long sound means 'A boat is disqualified.' The umpire will hail or signal to identify the boat disqualified.

Q3.2 (a) A boat penalized under instruction Q3.1(b) shall take a One-Turn Penalty as described in rule 44.2.

(b) A boat disqualified under instruction Q3.1(c) shall promptly leave the course area.

Q4 PENALTIES AND PROTESTS INITIATED BY AN UMPIRE; ROUNDING OR PASSING MARKS

Q4.1 When a boat

- (a) breaks rule 31 and does not take a penalty,
- (b) breaks rule 42,
- (c) gains an advantage despite taking a penalty,
- (d) deliberately breaks a rule,

- (e) commits a breach of sportsmanship, or
- (f) fails to comply with instruction Q3.2 or to take a penalty when required to do so by an umpire, an umpire may penalize her without a protest by another boat. The umpire may impose one or more One-Turn Penalties to be taken as described in rule 44.2, each signalled in accordance with instruction Q3.1(b), or disqualify her under instruction Q3.1(c), or report the incident to the protest committee for further action. If a boat is penalized under instruction Q4.1(f) for not taking a penalty or taking a penalty incorrectly, the original penalty is cancelled.

Q4.2 (a) A boat shall not round or pass a mark on the wrong side. If she does so, she may correct her error as provided in rule 28.2 only if she does so before she rounds or passes the next mark or finishes.

(b) When a boat breaks instruction Q4.2(a) and fails to correct her error before rounding or passing the next mark or finishing, an umpire may disqualify her under instruction Q3.1(c).

Q4.3 An umpire who decides, based on his own observation or a report received from any source, that a boat may have broken a rule, other than instruction Q3.2 or Q4.2(a) or a rule listed in instruction Q2.1, may inform the protest committee for its action under rule 60.3. However, he will not inform the protest committee of an alleged breach of rule 14 unless there is damage or injury.

Q5 PROTESTS; REQUESTS FOR REDRESS OR REOPENING; APPEALS; OTHER PROCEEDINGS

Q5.1 No proceedings of any kind may be taken in relation to any action or non-action by an umpire.

Q5.2 A boat may not base an appeal on an alleged improper action, omission or decision of the umpires or the protest committee. In rule 66 the third sentence is changed to 'A party to the hearing may not ask for a reopening.'

Q5.3 (a) Protests and requests for redress need not be in writing.

(b) The protest committee may take evidence and conduct the hearing in any way it considers appropriate and may communicate its decision orally.

(c) If the protest committee decides that a breach of a rule has had no effect on the outcome of the race, it may impose a penalty of points or fraction of points or make another arrangement it decides is equitable, which may be to impose no penalty.

Q5.4 The race committee will not protest a boat, except following a report under rule 43.1(c) or 78.3.

Q5.5 The protest committee may protest a boat under rule 60.3. However, it will not protest a boat for breaking instruction Q3.2 or Q4.2(a), a rule listed in instruction Q2.1, or rule 14 unless there is damage or injury.