



2014 SEIKO Junior World Championship.
Sailing Instructions

SEIKO



The Organising Authority is Sailing Aarhus in conjunction with the
International 49er Class Association

1. RULES

- 1.1 The regatta will be governed by the rules as defined in *The Racing Rules of Sailing*.
- 1.2 No national authority prescriptions will apply.
- 1.3 Danish legislation requires every boat to be equipped with personal buoyancy for the number of persons on board at any time.
- 1.4 If there is a conflict between languages the English text will prevail.
- 1.5 For the Final races, Addendum Q will apply and takes precedence over any conflicting instructions.
- 1.6 Where there is conflict with the Notice of Race, the Sailing Instructions shall prevail except that neither shall change nor alter any Class Rules. This changes RRS 63.7

2. IDENTIFICATION

- 2.1 Boats may be required to affix the stickers provided by the Organising Authority on both side of the forward 25% of the hull, 300mm from the bow.
- 2.2 Identification on sails
Appendix G3 will apply. Boats chartered or loaned for this event may carry national letters or a sail number in contravention of class rules. In no circumstances will such a boat be permitted to race displaying the sail number of another boat that is racing. This changes Appendix G3.

3. RIGHTS TO USE NAME AND LIKENESS

By participating in this event, competitors automatically grant to the organizing authority and the event sponsors the right, in perpetuity, to make, use, and show, at their discretion, any photography, audio and video recordings, and other reproductions of them made at the venue or on the water from the time of their arrival at the venue, until their final departure, without compensation.

4. NOTICES TO COMPETITORS

Notices to competitors will be posted on the official notice board located at the Race Office in the dinghy park.

5. CHANGES TO SAILING INSTRUCTIONS

Any change to the sailing instructions will be posted not less than two hours before the scheduled warning signal on the day it will take effect, except that any change to the schedule of races, will be posted by 20.00 the day before it will take effect.

6. SIGNALS MADE ASHORE

- 6.1 Signals made ashore will be displayed at the official flagpole located immediately outside the Race Office. When a signal is displayed over a class flag, it applies to that fleet only.



SEIKO



- 6.2 Flag D displayed ashore with one sound signal this means: “the warning signal will be made not less than 30 minutes after flag D is displayed or not before the scheduled time, whichever is later. Boats shall not leave their allocated berth until this signal is made”.

7. SCHEDULE OF RACES

Date	Event	Warning signal
Friday 27 June	Registration	0900 – 1800
	Opening Ceremony	1900
Saturday 28 June	Competitors Meeting	0900
	Races	1200
Sunday 29 June	Races	1200
Monday 30 June	Races	1200
Tuesday 1 July	Races	1000
	Final races	1400
	Prize giving and Closing Ceremony as soon as possible after the Final Race	

When more than one race, or sequence of races, will be held on the same day, the warning signal for each succeeding race will be made as soon as practicable.

8. FORMAT OF RACING – QUALIFYING RACES AND FINAL RACES

For the 49er the regatta will consist of a Qualifying Races and Final Races.

For the 49erFX the regatta will consist of Fleet Races and Final Races.

These races are as described in Attachment C.

9. CLASS FLAGS

- 9.1 The Qualifying series, the class flag will be a 49er class insignia on a background of the colour of the appropriate fleet, yellow or blue. For 49erFX the class flag will be 49erFX class insignia on a background of white.
- 9.2 In the Final races, the class flag will be the 49er class insignia on a background of yellow. For 49erFX class insignia on a background of white.

10. RACING AREAS

- 10.1 Attachment B shows the location of the race area. Race course area C is reserve area.
- 10.2 Initial assignment of fleets to the racing area will be posted before flag D is displayed, see SI 6.2.
- 10.3 Boats not racing shall not sail in the course area being used by another fleet.
- 10.4 For the Final Races the location of the racing area will be posted on the official notice board.

11. THE COURSES

- 11.1 Attachment A shows the course to be sailed, the order in which the marks are to be passed, the side on which each mark is to be left, and the signals indicating the number of rounds to be sailed.



SEIKO



- 11.2 No later than the warning signal, the race committee signal vessel may display the approximate compass bearing from the race committee signal vessel to Mark 1.
- 11.3 There will be gates at the leeward marks.
- 11.4 A gate may be replaced by a single mark to be left to port
- 11.5 On the last leg to the finish, the leeward gate is not a mark.

12. MARKS

Marks 1 and 2 (gate) - racing area A	Yellow
Marks 1 and 2 (gate) - racing area B	Orange
Starting marks	Race Committee vessels
Finishing marks	Race Committee vessels

13. THE START

- 13.1 The starting line will be between staffs displaying orange flags on the starting marks (race committee starting vessels) at each end of the starting line.
- 13.2 Boats whose warning signal has not been made shall avoid the starting area.
- 13.3 A boat starting later than four minutes after her starting signal will be scored Did Not Start. This changes RRS A4 and A5.
- 13.4 To alert boats that a race or sequence of races will begin soon, the orange starting line flag will be displayed with ONE sound signal not less than TWO minutes before the warning signal is displayed.

14. CHANGE OF THE NEXT LEG OF THE COURSE

To change the next leg of the course, the race committee will move the existing marks (or move the finishing line).

15. THE FINISH

The finishing line will be between staffs displaying orange flags on the finishing marks.

16. TIME LIMITS

- 16.1 Time limits and target times are as follows:

Time limit	45 minutes
Mark 1 time limit	15 minutes
Target time	30 minutes or as described in Appendix C
- 16.2 If no boat has passed mark 1 within the mark 1 time limit, the race may be abandoned.
- 16.3 Boats failing to finish within 15 minutes after the first boat sails the course and finishes will be scored Did Not Finish without a hearing. This changes RRS 35, A4 and A5.

17. PENALTY SYSTEM

- 17.1 RRS 44.1 and RSS P2.1 are changed so that the two turn penalty is replaced by a one turn penalty including a tack and a gybe.
- 17.2 Appendix P will apply, as changed by SI 17.1



18. PROTESTS AND REQUESTS FOR REDRESS

- 18.1 Protest forms are available at the race office. Protests and requests for redress or reopening shall be delivered there within the protest time limit.
- 18.2 The protest time limit will be posted on the jury notice board located at the Race Office. The protest time limit will be 60 minutes after the last boat of the whole fleet has finished the last race of the day or the race committee signals no more racing today, whichever is later. The same time limit applies to protests by the race committee and jury about incidents they observe in the racing area. This time limit also applies to requests for redress. This changes RRS 61.3 and 62.2.
- 18.3 Notices will be posted within 30 minutes of the protest time limit to inform competitors of hearings in which they are parties or named as witnesses. Hearings will be held in the jury room located in the Sailing Club. Hearings may start before the scheduled time with the agreement of all parties.
- 18.4 The race committee or jury intending to protest a boat under RRS 60.2 or 60.3 will comply with RRS 61.1(b) by informing her by posting a notice before the end of the protest time limit of the last fleet to finish.
- 18.5 A list of boats that have been penalized under RRS Appendix P on the water or have been disqualified by the jury will be posted on the official notice board.
- 18.6 For the purposes of RRS 64.3(b) the 'authority responsible' is the measurer appointed by the Organising Authority.
- 18.7 Breaches of instructions 2, 6.2, 10.3, 21, 22.2, 23.2, 25, 26 and 27 will not be grounds for protest by a boat. This changes RRS 60.1(a). Penalties for these breaches may be less than disqualification if the jury so decides.
- 18.8 On the last day of fleet racing of each series a request for reopening a hearing shall be delivered:
- i) within the protest time limit if the party requesting reopening was informed of the decision on the previous day;
 - ii) no later than 30 minutes after the party requesting reopening was informed of the decision on that day.
- This changes RRS 66.
- 18.9 On the last scheduled day of fleet racing of each series a request for redress from a jury decision shall be delivered no later than 30 minutes after the decision was posted. This changes RRS 62.2.

19. INTERNATIONAL JURY

Decisions of the international jury will be final as provided in RRS 70.5

20. SCORING

20.1 Qualifying and fleet races

- 20.1.1 The low point scoring system of Appendix A, as changed below, will apply to the qualifying races.
- 20.1.2 For all fleets, FIVE Qualifying races are required to be completed to constitute a series.
- 20.1.3 When 4 or more races have been completed, a boat's Qualifying races score shall be the total of her race scores excluding her worst score.
- 20.1.4 When RRS A4.2 and A5 apply, a boat's penalty score shall be based on the number of boats in the largest group. This changes RRS A4.2 and A5.
- 20.1.5 The Qualifying series points including discard are carried forward to the Final racing series.



SEIKO



- 20.2 **Final races**
See Attachment C for details
- 20.4 **Scoring enquiries**
To request correction of an alleged error in posted race or series results, a boat shall complete a scoring enquiry form available at the race office. Scoring enquiry forms shall be delivered to the race office. A scoring enquiry may be regarded as a request for redress.
- 20.5 **Scoring abbreviation**
The scoring abbreviation for a discretionary penalty imposed under SI 18.7 will be 'DPI'.

21. SAFETY

- 21.1 Boats not leaving the shore for the day's races shall notify the race office as soon as possible.
- 21.2 A boat that retires from a race shall notify the race committee as soon as possible.
- 21.3 When Flag V is displayed by the race committee signal vessel, coach and other support boats will collaborate with the race committee in rescue tasks.

22. REPLACEMENT OF CREW OR EQUIPMENT

- 22.1 Replacement of helm, crew or equipment shall require written approval of the PRO
- 22.2 Request for replacement of helm, crew or equipment shall be made to the PRO at the first reasonable opportunity. On Tuesday 1 July any replacement equipment shall be approved no later than the protest time limit.

23. EQUIPMENT

- 23.1 Any boat or equipment may be checked for compliance with the class rules and sailing instructions at any time. On the water, a boat can be instructed by a race committee measurer to proceed immediately to a designated area for measurement checks.
- 23.2 Limitations of equipment
- i) Only one set of sails shall be used during the regatta. The sails shall be presented and stamped during the initial inspection.
 - ii) Only one forestay shall be used during the regatta.
- 23.3 All boats, when not afloat, shall be placed in the official dinghy park.

24. OFFICIAL BOATS

Official boats will be identified as follows:

Jury boats White flags with "J"

25. SUPPORT BOATS

- 25.1 Team leaders, coaches and other support personnel shall not be in the area where boats are racing or within 50 meters of any boat racing from the time of the preparatory signal for the first fleet to start until all boats have finished or the race committee signals a postponement, general recall or abandonment. This SI does not apply during rescue operations.



SEIKO



- 25.2 At all times while on water, support boats shall display either their national flag on a staff with the top of the hoist minimum 1.5 m above water level or their national code letters (minimum height 200mm) on the outside of the hull or on the outboard motor cover. Furthermore support boats shall be marked with a number supplied by the Organising Authority. This number shall be clearly visible on the boats.
- 25.3 Support boats that are motoring at more than 5 knots shall remain at least 150 metres from any boat that is racing.
- 25.4 Support boats shall comply with any reasonable request from a regatta official.
- 25.5 All support boats are at all times submitted to the Organising Committee and Race Committee authority, are legally considered as assistance / rescue boats and must comply with any instructions given by these authorities or by the police.
- 25.6 The International Jury may direct the Organising Authority to revoke privileges from any boat or person found to be in breach of SI 25.

26. TRASH DISPOSAL

As sailors, we seek to protect and restore our oceans and coastal waters. Boats shall not intentionally put trash in the water. Trash may be placed aboard support and race committee boats. The penalty for breaking RRS 55 is at the discretion of the Jury and may be less than disqualification.

27. RADIO COMMUNICATION

A boat shall neither make radio transmissions while racing nor receive radio communications not available to all boats. This restriction also applies to mobile telephones.

28. PRIZES

The Organising Authority will provide prizes to the first three boats in each of the fleets.

29. DISCLAIMER OF LIABILITY

Competitors participate in the regatta entirely at their own risk. See RRS 4, Decision to Race. The Organising Authority will not accept any liability for material damage or personal injury or death sustained in conjunction with or prior to, during or after the regatta.

30. INSURANCE

Each participating boat shall be insured with valid third-party liability insurance with a minimum cover of Euro 1,500,000 or the equivalent.

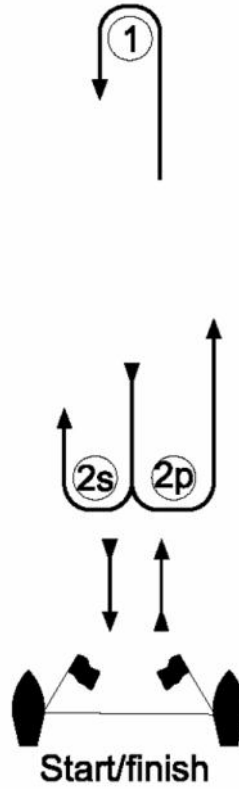


SEIKO



Attachment A

Course Layout

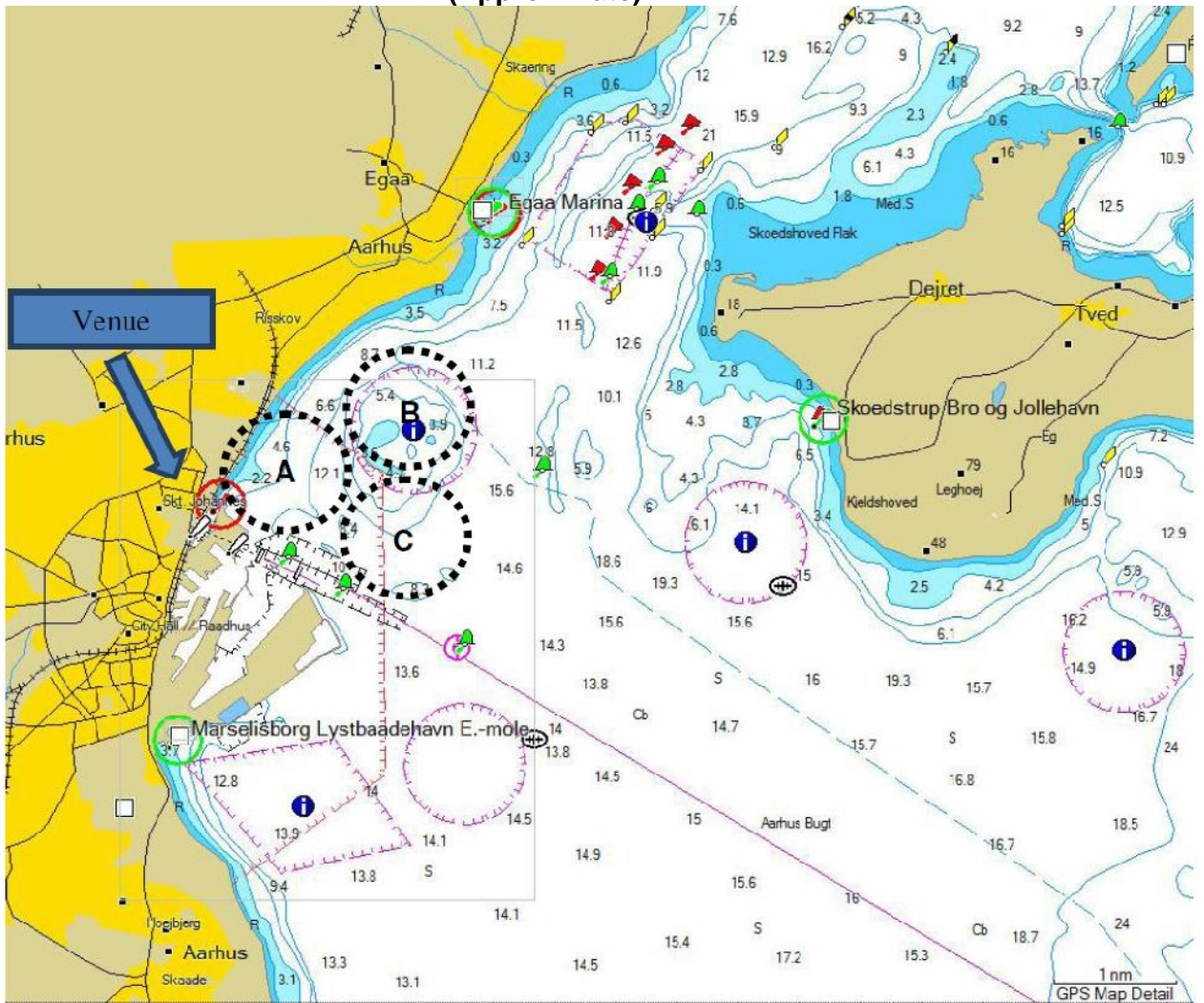


Course signal	Mark rounding order
L2	START – 1 – 2s/2p – 1 – FINISH
L3	START – 1 – 2s/2p – 1 – 2s/2p – 1 – FINISH
L4	START – 1 – 2s/2p – 1 – 2s/2p – 1 – 2s/2p – 1 – FINISH



Attachment B

Course Locations (Approximate)



Attachment C

1. Format of Racing

49er

- 1.1 The Championship will be in two parts
 1. Qualifying Races
 2. Final Races.
- 1.2 The Organising Authority will make initial fleet assignments on the basis of the current ISAF Ranking List, recent results and any other relevant information. This ranking will remain in force until the end of a day during which the 2nd Qualifying Race is completed by all fleets.
- 1.3 If all fleets have completed the same number of races, boats will be reassigned to fleets on the basis of their series scores. If all fleets have not completed the same number of races by the end of a day the fleets with fewer races will continue racing the following day until all fleets have completed the same number of races. Unless Format of Racing instruction 2.4 applies. However the reassignments will be calculated for those races, numbered in order of completion, completed by all fleets. Reassignments will be made as follows:

Place in series score	Fleet assignment
First.....	Yellow
Second.....	Blue
Third.....	Blue
Fourth.....	Yellow
and so on	

Assignments will be based on the scores available at 21.00 that day regardless of protests or requests for redress not yet decided. The fleet assignments will be posted no later than 09:00 on the day they take effect.

2. **Split Fleet Qualifying Races** (Days 1 and 2)

- 2.1 The fleet will be split into TWO groups of approximately equal numbers of boats.. The Qualifying racing series will consist of a maximum of NINE races
- 2.2 A maximum of THREE races per day for each fleet may be sailed at the discretion of the race committee.
- 2.3 If the minimum number of FIVE Qualifying races have been completed by all fleets by the end of racing on any day and some boats have more races scores than others, scores for the most recent races will be excluded when calculating their Qualifying series scores.
- 2.4 Qualifying continues until at least FIVE races have been completed.
- 2.5 No warning signal for the Qualifying races will be made after 12.00 on Tuesday 1 July.



SEIKO



3 Gold fleet/Silver fleet Races (days 3 and 4)

With 25 boats in Gold fleet.

4 Final Races (Day 4)

4.1 No warning signal for the Fleet races will be made after 12.00 on Tuesday 1 July.

4.2 No warning signal for the Final races will be made after 18.00 on Tuesday 1 July.

4.4 The Final will be for the top 10 boats overall from the gold fleet and they will sail off for the Championship.

Points from Qualifying races with one discard and Final races (with double points) with no discard are added together to get the Championship points score.

49erFX

5. Fleet Races (Days 1, 2, 3 and 4)

5.1 The 49erFX girls and 49erFX Mix will sail in ONE fleet. The Qualifying racing series will consist of a maximum of NINE races.

5.2 A maximum of THREE races per day may be sailed at the discretion of the race committee.

5.3 Qualifying continues until at least FIVE races have been completed.

5.4 No warning signal for the Qualifying races will be made after 12.00 on Tuesday 1 July.

6. Final Races (Day 4)

5.1 No warning signal for the Final races will be made after 18.00 on Tuesday 1 July.

5.2 The Final for the 49erFX - girls will be for the top 10 boats overall they will sail off for the Championship.

Points from Qualifying races with one discard and Final races (with double points) with no discard are added together to get the Championship points score.

Further information regarding the Final Races for the 49er and 49erFX will be posted on the official notice board.



SEIKO

