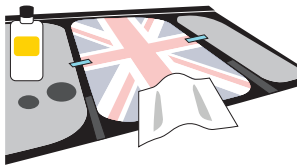
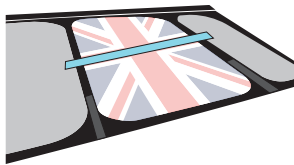


49er / 49er FX Country Flags



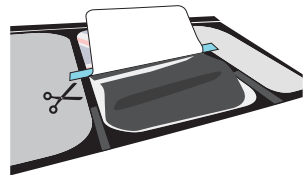
Step 1

Ensure that the sail is clean and dry using a degreasing agent with a dry cloth. Then use tabs of tape to position the graphic in the panel on the port side of the sail.



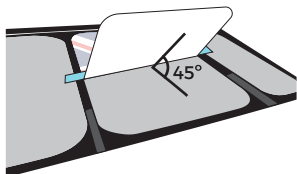
Step 2

Run a line of tape through the centre of the country flag along the shortest width to create a hinge.



Step 3

Using the tape as a hinge, lift and flip one half of the country flag back onto itself. Peel the backing paper away, up to the tape line and cut away the backing paper approximately 40mm from the tape line.



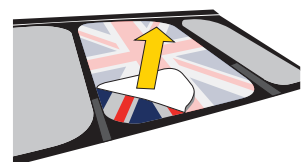
Step 4

Flip the graphic back over and have someone hold the vinyl approx 45° to the sail. Using a squeegee**, press down the graphic in a sweeping motion and work your way across the graphic, starting at the hinged edge.



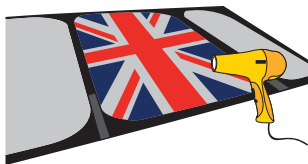
Step 5

Remove the tape line and peel off the remaining backing paper from the other side. Have someone hold the loose vinyl at approx 45° to the sail and make a sweeping motion across the graphic with a squeegee**.



Step 6

Remove the transfer paper by peeling it back from one corner in a smooth motion. Peeling the paper back, fully flat on itself will reduce the pull on the graphic.



Step 7

Gently heat over the graphic with a hair dryer as you press the graphic down with a squeegee**. Pay particular attention to covered panel edges and stitching.

** You can buy a squeegee in our online shop. Alternatively, use a credit card wrapped in cloth.



01489 570055



sales@grapefruitgraphics.com



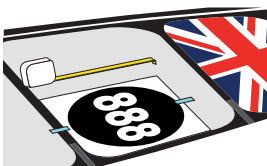
www.grapefruitgraphics.com

49er / 49er FX Mainsail Identification



Step 1

Position the sail on flat ground with the port side facing up. Clean the branding area with a degreasing agent and a dry cloth.



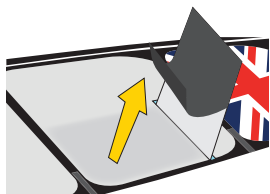
Step 2

Using tabs of masking tape, place the disc graphic in the branding area. Using a tape measure adjust each tab to accurately position the graphic in place.*



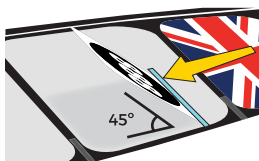
Step 3

When it is in position, tape down one short edge of the graphic, with half of the tape width on the graphic and half on the sail. Remove the previous tabs of tape. This will create a hinge.



Step 4

Lift and flip the disc graphic using the hinge. Then remove the backing paper by peeling it back flat on itself, starting at the hinge end.



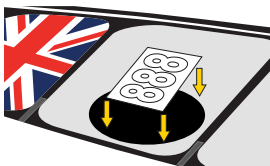
Step 5

Flip the graphic back over and hold it approximately 45° to the sail. Using a squeegee**, press down the graphic in a sweeping motion across the graphic, starting at the taped edge.



Step 6

Remove the transfer paper by peeling it back from one corner, in a smooth motion. Peeling the paper back, fully flat on itself to reduce the pull on the graphic.



Step 7

Flip the sail over and repeat steps 1 - 6 for the Country Code lozenges and position the white number graphic centrally on the back of the black disk.

* Always check current ISAF guidelines to ensure correct placement of all graphics before application.

** You can buy a squeegee in our online shop. Alternatively, use a credit card wrapped in cloth.

☎ 01489 570055

✉ sales@grapefruitgraphics.com

🌐 www.grapefruitgraphics.com